



 P O Box 427 Pretoria 0001 South Africa

 370 Helen Joseph Street Pretoria 0002

 +27 12 313 3911 / 0861 12 7272

 www.resbank.co.za



SOUTH AFRICAN RESERVE BANK

IMANUWALI YE-SOUTH AFRICAN RESERVE BANK GROUP PAIA/POPIA

**NGOKWEMIGOMO YEZIGABA 14 NO-51 YOKUTHUTHUKISWA KOMTHETHO
WOKUFINYELELA ULWAZI, KA-2000 (UMTHETHO NO. 2 KA 2000)**

KANYE

**NOMTHETHO WOKUVIKELWA KOLWAZI LOMUNTU SIQU, KA-2013
(UMTHETHO NO. 4 KA-2013)**

OKUPHAKATHI

ISAPHLUKO 1: UKWAKHEKA NEMISEBENZI YE-SARB	1
ISAPHLUKO 2: IMINININGWANE YOKUXHUMANA.....	4
ISAPHLUKO 3: ISIGABA 10 – UMHLAHLANDLELA WOKUSEBENZISA IMANUWALI YE-PAIA/POPIA6	
ISAPHLUKO 4: IZINQUBO ZOKUCELA UKUTHOLA IREKHODI LE-SARB NGOKWEMIGOMO YESIGABA 18 YE-PAIA NOMA UKUTHOLA ULWAZI LOMUNTU NGOKWEMIGOMO YESIGABA 23 SE-POPIA 9	
ISAPHLUKO 5: IZINQUBO ZOKUPHIKISA UKUCUTSHUNGULWA KOLWAZI LOMUNTU NGOKWEMIGOMO YESIGABA 11(3) YE-POPIA.....	10
ISAPHLUKO 6: IZINQUBO ZOKULUNGISA, UKUSUSA NOMA UKUSHABALALISWA KOLWAZI LOMUNTU NOMA IREKHODI NGOKUHAMBISANA NESIGABA 24(1) SE-POPIA.....	11
ISAPHLUKO 7: IZINTO I-SARB ENAMAREKHODI AZO NEMIKHAKHA YAMAREKHODI AGCINIWE NGALEYO NTO	12
ISAPHLUKO 8: IMIKHAKHA YAMAREKHODI ATHOLAKALA NGOKUZENZAKALELAYO	13
ISAPHLUKO 9: AMASEVISI ANGATHOLWA NGAMALUNGU OMPHAKATHI.....	14
ISAPHLUKO 10: UKUBAMBA IQHAZA KOMPHAKATHI.....	14
ISAPHLUKO 11: IZIXAZULULO EZITHOLAKALAYO KUMFAKI-SICELO	15
ISAPHLUKO 12: IZIXAZULULO EZINGATHOLWA NGUMNINILWAZI	15
UKUTHOLAKALA KWALE MANUWALI	15
UKUZIHLANGULA:.....	15
ISHEJULI 1	21
ISHEJULI 2	23
A. Imininingwane yenhlangano yomphakathi	23
B. Imininingwane yomuntu ofaka isicelo sokuthola amarekhodi	24
C. Imininingwane yomuntu okwenziwa isicelo egameni lakhe	24
D. Imininingwane yamarekhodi	24
E. Imali	25
F. Uhlobo amarekhodi okumelwe abe yilo	25
G. Isaziso sesinqumo mayelana nesicelo sokuthola ulwazi	27

ISAHLUKO 1: UKWAKHEKA NEMISEBENZI YE-SARB

1.1 UMGOMO

I-South African Reserve Bank (SARB) iyibhange elikhulu LeRiphabliki YaseNingizimu Afrika, elisungulwe ngokwemigomo Yesigaba 223 Yomthetho-sisekelo WaseNingizimu Afrika, 1996. Ifeza imisebenzi yalo ngokwemigomo Yomthetho Webhange-Ngodla LaseNingizimu Afrika, 1989 (Act No. 90 of 1989 (SARB Act)). Imithethonqubo emenezelwe ngaphansi Kwe-SARB Act inikeza uhlaka lokusebenza kwe-SARB. Umgomo oyinhloko we-SARB ukuvikela amandla emali ngokuhambisana nokukhula komnotho okulinganiselayo nokuzinzile kuyiRiphabliki. Ngaphezu komgomo wayo oyinhloko, inomsebenzi wokuthuthukisa nokukhuthaza uzinzo olungokwezimali.

1.2 UKWAKHEKA

1.2.1 Ibhodi Nabaphathi Abakhulu

1.2.1.1 I-SARB Act inebhodi Labaqondisi (Board) elinamalungu angu-15. Kula malungu KunoMphathi Omkhulu NabaPhathi Abangamasekela abathathu be-SARB, abaqokwa nguMengameli WeRiphabliki inkathi eyiminyaka emihlanu umuntu emunye. Abanye abaqondisi abane uMengameli ubaqokela inkathi eyiminyaka emithathu.

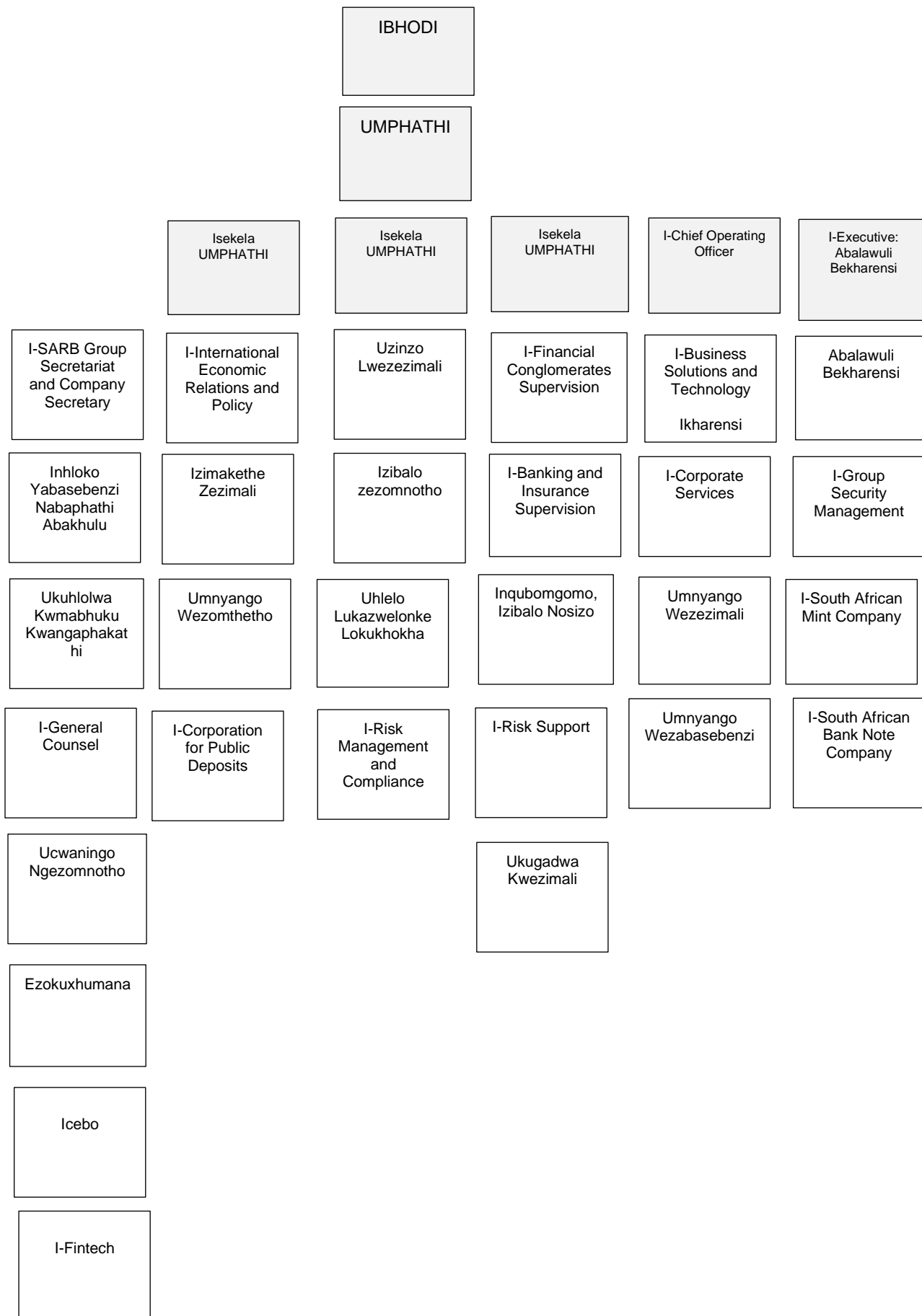
1.2.1.2 Abaqondisi abayisikhombisa abasele, oyedwa wabo omele ezolimo, oyedwa ezabasebenzi, oyedwa ezezimayini, ababili ezezimboni nababili ezomnotho, bakhethwa abanikazi bamasheya e-SARB inkathi eyiminyaka emithathu. UMphathi Omkhulu Namasekela-Mphathi akhe basingatha izindaba zansuku zonke ze-SARB. Ngakolunye uhlangothi ibhodi libhekelele ukuphatha nokuqondisa futhi lidlala indima yokuqondisa ngokwemigomo ye-SARB Act.

1.2.2 I-SARB

1.2.2.1 I-SARB inezinkampani ezingaphansi kanye nezinhlangotho ezihlobene nayo ezilandelayo (ezibizwa ngokuthi I-SARB Group):

- a) The South African Bank Note Company (RF) (Pty) Ltd (SABN);
- b) The South African Mint Company (RF) (Pty) Ltd (South African Mint);
- c) The Corporation for Public Deposits (CPD);
- d) I-Prudential Authority (PA);
- e) I-Corporation for Deposit Insurance (CODI) (uma seyisunguliwe); kanye
- f) ne-SARB Retirement Fund (SARB RF).

1.2.3 Ukwakheka kwenhlangano ye-SARB



1.3 IMISEBENZI YE-SARB

1.3.1 I-SARB, ngokwegunya eliphathisiwe kanye nokufeza izibopho zayo, inale misebenzi eyinhloko elandelayo:

1.3.1.1 Inqubomgomo Yezezimali

UMthethosisekelo unikeza i-SARB igunya lokuvikela amandla erandi. Amazinga enzalomboleko asetshenziselwa ukugcina ukukhuphuka kwamanani kuphansi futhi kuzinzile.

1.3.1.2 Uzinzo Lwezezimali

I-SARB inegunya elingokomthetho lokuvikela nokuthuthukisa uzinzo lwezezimali. I-SARB ithola bese inciphisa izingozi ezingokohlelo ezingaphazamisa uhlelo lwezezimali.

1.3.1.3 Umthethonqubo Onokuqonda

I-Prudential Authority ilawula izikhungo zezimali nezingqalasizinda zezimakethe ukuze ithuthukise futhi ikhuthaze ukuphepha kwazo nokuba sesimweni esikahle, futhi isekele uzinzo lwezezimali.

1.3.1.4 Izimakethe Zezimali

Izimakethe ezingalawulwa uhulumeni zingamathuluzi ayinhloko okusebenzisa inqubomgomo yezezimali. I-SARB ilawula izinqolobane zegolide zaseNingizimu Afrika kanye nezokushintshana kwezimali zamanye amazwe.

1.3.1.5 Ukugadwa Kwezimali

I-SARB inesibopho sokulawula uhwebo namazwe angaphandle, okuvimbela ukusetshenziswa kabi kohlelo lwezimali futhi kusekele ukulawulwa kwezikhungo zezimali.

1.3.1.6 Ukukhokhelana

I-SARB inesibopho sokuqinisekisa ukuphepha nokuba sesimweni esikahle kohlelo lwezwe lokukhokhelana, oluwumgogodla wohlelo lwesimanje lwezezimali lwaseNingizimu Afrika.

1.3.1.7 Izibalo

I-SARB inikeza izibalo ezibalulekile zezomnotho nezezimali eziveza isimo sezomnotho saseNingizimu Afrika yonkana.

1.3.1.8 Ucwangingo

Ucwangingo olwenziwa yi-SARB lugxila kwezomnotho, ukuzinza kwezezimali, amabhange, nezindlela ezintsha zokwenza izinto kwezezimali. Ucwangingo lusiza ekwenziweni kwezinqumo zezinqubomgomo.

1.3.1.9 Imali eyiphepha newuhlamvu

I-SARB iyona yodwa enegunya lokwenza, lokukhipha nokushabalalisa imali eyiphepha neyizinhlamvu eNingizimu Afrika.

1.3.1.10 I-Deposit Insurance

Lapho kumenyezela i-Financial Sector Laws Amendment Bill (FSLAB), i-CODI izobekwa njenge-deposit insurer kanti i-SARB izoba igunya lezixazululo lezikhungo ezikhethiwe.

ISAHLUKO 2: IMININGWANE YOKUXHUMANA

2.1 ISIKHULU SEZOLWAZI SETHIMBA LE-SARB

UMphathi Omkhulu we-SARB, ngokwemigomo yesigaba 1 Somthetho Wokuthuthukisa Ukufinyelela Ulwazi, ka-2000 (Umthetho No. 2 Ka-2000 (PAIA) nesigaba 1 Somthetho Wokuvikelwa Kolwazi Lomuntu Siqu, ka-2013 (Umthetho No. 4 Ka-2013 (POPIA), weSikhulu Sezolwazi se-SARB. UMphathi, nokho, uye wadlulisela amandla nemisebenzi aphathiswe yona ngokuhambisana nesigaba 17(3) ye-PAIA Esikhulwini Esiyinhloko Sezolwazi se-SARB, endimeni yaso njengeSekela Lesikhulu Sezolwazi ngenjongo ye-PAIA ne-POPIA. ISekela Lesikhulu Sezolwazi se-SARB kungaxhunyanwa naso ngendlela elandelayo:

2.1.1 Ikheli lendawo

Irene Link
13 Impala Avenue
Doringkloof
Centurion
0157

2.1.2 Ikheli leposi

P O Box 427
Pretoria
0001
Tel.: +27 12 313 3911

2.1.3 Ikheli Le-imeyili

privacy@resbank.co.za
www.resbank.co.za

2.1.4 I-SARB

INKAMPANI/INHLANGANO	UMSEBENZI	IZIKHULU ZEZOLWAZI	IMININGWANE YOKUXHUMANA
Ibhang-Ngodla LaseNingizimu Afrika	Ibhang elikhulu LeRiphabliki YaseNingizimu Afrika, elisungulwe ngokwemigomo Yesigaba 223 Yomthethosisekelo WeRiphabliki YaseNingizimu Afrika, ka-1996 (Umthethosisekelo) futhi lifeza imisebenzi yalo ngokwemigomo Yomthetho 90 Webhang-Ngodla LaseNingizimu Afrika ka-1989 (SARB Act).	Isikhulu Sezolwazi: ULesetja Kganyago ISekela Lesikhulu Sezolwazi: U-Michelé Schliesser	Irene Link 13 Impala Avenue, Doringkloof Centurion, 0157 P O Box 427, Pretoria, 0001 privacy@resbank.co.za www.resbank.co.za

2.1.5 IZINKAMPANI NEZINHLANGANO EZIHLOBENE NE-SARB

INKAMPANI/INHLANGANO	UMSEBENZI	IZIKHULU ZEZOLWAZI	IMININGWANE YOKUXHUMANA
South African Bank Note Company (RF) (Pty) Ltd (SABN)	Inkampani engaphansi ephethwe ngokuphelele yi-SARB nebhalisiwe ngokwemigomo Yemithetho Yezinkampani zaseNingizimu Afrika. Isungulelwe ukuprinta imali eyiphepha ezokhishwa yi-SARB.	Isikhulu Sezolwazi: ULiziwe Mda ISekela Lesikhulu Sezolwazi: U-Michelé Schliesser	460 Jan Van Riebeeck Street, Pretoria, 0182 P O Box 16172, Pretoria North, 0116 privacy@resbank.co.za www.resbank.co.za
The South African Mint Company (RF) (Pty) Ltd (South African Mint)	Inkampani engaphansi ephethwe ngokuphelele yi-SARB nebhalisiwe ngokwemigomo Yemithetho Yezinkampani zaseNingizimu Afrika. Isungulelwe ukugxiviza izinhlamvu zemali ezikhishwa yi-SARB.	Isikhulu Sezolwazi: U-Honey Mamabolo ISekela Lesikhulu Sezolwazi: U-Michelé Schliesser	Old Johannesburg Road, Gateway, Centurion P O Box 464, Pretoria 0001 privacy@resbank.co.za www.resbank.co.za
The Corporation for Public Deposits (CPD)	Isungulwe ngokwemigomo yesigaba 2 ye-Corporation for Public Deposits Act 46 of 1984. I-CPD yamukela izimali ezifakwe ku-akhawunti ye-call deposit ezivela emkhakheni wamabhizinisini omphakathi bese itshala leyo mali ezimakethe	Isikhulu Sezolwazi: URashad Cassim ISekela Lesikhulu Sezolwazi: U-Michelé Schliesser	Irene Link 13 Impala Avenue, Doringkloof Centurion, 0157 P O Box 427, Pretoria, 0001 privacy@resbank.co.za www.resbank.co.za

INKAMPANI/INHLANGANO	UMSEBENZI	IZIKHULU ZEZOLWAZI	IMININGWANE YOKUXHUMANA
	zemali zesikhathi esifushane naku-special Treasury bills.		
I-Prudential Authority (PA)	I-PA isungulwe ngokwemigomo ye-Financial Sector Regulation Act 9 ka-2017. Isungulwe ngenjongo yokukhipha amalayisense nokuqondisa ngokuqhubekayo umkhakha wezezimali.	Isikhulu Sezolwazi: UNomfundo Tshazibana ISekela Lesikhulu Sezolwazi: U-Michelé Schliesser	Irene Link 13 Impala Avenue, Doringkloof Centurion, 0157 P O Box 427, Pretoria, 0001 privacy@resbank.co.za www.resbank.co.za
I-Corporation for Deposit Insurance (CODI) (lapho isisunguliwe)	Izosungulwa ngokwemigomo ye-Financial Sector Laws Amendment Bill (kuzomenyezela). Isungulwa ukuze inikeze umshwalense wokudiphosa kubafakimali ukunikeza isinqumo okuvunyelwene ngaso ezinhlanganweni ezikhethiwe.	Isikhulu Sezolwazi: U- Hendrik Nel ISekela Lesikhulu Sezolwazi: U-Michelé Schliesser	Irene Link 13 Impala Avenue, Doringkloof Centurion, 0157 PO Box 427, Pretoria, 0001 privacy@resbank.co.za www.resbank.co.za

ISAHLUKO 3: ISIGABA 10 – UMHLAHLANDLELA WOKUSEBENZISA IMANUWALI YE-PAIA/POPIA

- 3.1** Ngokwemigomo yesigaba 10 ye-PAIA, Umlawuli Wezolwazi uhlanganise umhlahlandlela osemthethweni onolwazi lokusiza noma ubani ofuna ukusebenzisa ilungelo lakhe ukufinyelela ulwazi ngokwemigomo ye-PAIA, noma-ke ngabe yinoma yiluphi ulwazi oluqoshwe ku-POPIA.
- 3.2** Ikhophi yomhlahlandlela engokomthetho iyatholakala ehhovisi Lomlawuli Wezolwazi ekhelini elinikezwe ngezansi:

The Information Regulator (South Africa)
JD House
27 Stiemens Street
Braamfontein
JOHANNESBURG
2001

Umlawuli Wezolwazi kungaphinde kuxhunyanwe naye ngeposi, ngocingo,

ngesikhahlamezi noma nge-imeyili lapha: P O Box 31533

Braamfontein

Johannesburg 2017

Inombolo Yocingo: +27 10 023 5207

Inombolo Yefeksi: (011) 403 0668

I-imeyili yezikhalo: complaints.IR@justice.gov.za

I-imeyili Yemibuzo Evamile: infoeq@justice.gov.za

- 3.3** Le Manuwali ihlanganiswe ngokuvumelana nesigaba 14 no-51 se-PAIA kanye Nemithethonqubo ku-POPIA. Ihloselwe ukunika incazelo yamarekhodi aphethwe yi-SARB, nalawo ephathelwe wona, ukucacisa inqubo okufanele ilandelwe nemali ekhokhwayo lapho ucela ukuthola noma yimaphi amarekhodi ngaphansi kwe-PAIA noma lapho kusetshenziswa noma yiliphi ilungelo ngaphansi kwe-POPIA.
- 3.4** I-POPIA imiswe ngo-2013 futhi ihloselwe ukuthuthukisa ukuvikeleka kolwazi lomuntu siqu olucutshungulwa yizikhungo ezizimele nezomphakathi. I-POPIA ichibiyele izihlinzeko ze-PAIA, kanjalo ilinganisa isidingo sokuthola ulwazi uma kuqhathaniswa nesidingo sokuqinisekisa ukuvikeleka kolwazi lomuntu siqu.
- 3.5** I-PAIA iyayiqaphela imikhawulo ethile ekukwazini ukuthola ulwazi, kuhlanganise, kodwa kungacini, ngemikhawulo ehloselwe ukunika ukuvikeleka okunengqondo ngolwazi lomuntu ngendlela eyenza lelo lungelo lilingane nanoma yimaphi amanye amalungelo aqukethwe ku-POPIA.
- 3.6 UKUHAMBISANA NE-POPIA**
- 3.6.1** Ngokuvumelana ne-POPIA, ulwazi lomuntu lucutshungulwa ngendlela evumelana nomthetho ukuze kunganyathelwa ilungelo lakho lokugcina ulwazi lwakho luyimfihlo. Ulwazi lomuntu olucutshungulwayo luyoncika enjongweni yokuqoqwa kwalo. Uzatshelwa isizathu sokuqoqwa kolwazi lwakho nokuthi luzocutshungulwa kuphela ngokuhambisana naleyo njongo.
- 3.6.2** Uma ulwazi lwakho selucutshungulwa, unelungelo lokucela ukuba lulungiswe, lwesulwe noma kushatshalaliswe ulwazi lwakho, efomini elilungiselelwe. Ungase futhi uphikise ukucutshungulwa kolwazi lwakho ngefomu elilungiselelwe. Amafomu alungiselelwe afakiwe kule Manuwali ukuze kube lula kuwe.
- 3.6.3** Uzonikwa ukusikisela okubhaliwe kwemali ekhokhelwa ukukunika ulwazi lwakho, ngaphambi kokukunika usizo.

- 3.6.4 Uhlobo lolwazi lomuntu olungacutshungulwa, injongo yokucutshungulwa kwalo nalabo okungabelwana ngalo nabo kufakiwe ku-SARB External privacy notice (www.resbank.co.za).
- 3.6.5 Ulwazi lomuntu olucutshungulwayo lungadluliselwa kunoma yiziphi izinkampani ezingaphansi kwe-SARB, izinhlangano ezingabalingani noma abanikeza amasevisi abaseceleni, i-SARB exhumana nabo ngebhizinisi noma labo i-SARB ekhetha ukusebenzisa amasevisi noma imikhiqizo yabo, kuhlangukise namasevisi okugcina ulwazi ku-inthanethi ezisingathwa amagunya amazwe omhlaba.
- 3.6.6 I-SARB izama ukungena esivumelwaneni esibhaliwe ukuqinisekisa ukuthi amanye amalungu ayahambisana nemfuneko ye-SARB yokugcina imfihlo, ukuvikeleka nokuba yimfihlo kolwazi lomuntu.
- 3.6.7 Ulwazi lomuntu lungaphinde ludluliselwe kwamanye amalungu lapho i-SARB isebenza khona ngokomthetho noma inelungelo elingokomthetho lokwenza kanjalo.
- 3.6.8 I-SARB izama ukuthatha izinyathelo ezifanele, ezinengqondo zobuchwepheshe nezihambisana nenhlangano ukuvimbela ukulahleka, ukumosheka noma ukushabalaliswa okungagunyaziwe kolwazi lomuntu kanye nokuthola ngendlela engekho emthethweni noma ukucubungula ulwazi lomuntu.

3.7 IZICELO ZOKUTHOLA ULWAZI LOMUNTU

- 3.7.1 Izicelo zolwazi lomuntu ngaphansi kwe-POPIA kumele zenziwe ngokuhambisana nezihlinzeko ze-PAIA.

3.8 UKUPHIKISA NEZICELO ZOKULUNGISA, UKUSULA NOMA ZOKUSHATSHALALISWA

- 3.8.1 Ukuphikisa ukucutshungulwa kolwazi lomuntu, izicelo zokulungisa, ukwesula noma ukusatshalaliswa kolwazi lomuntu kumele kwenziwe ngokuvumelana ne-POPIA.

**ISAHLUKO 4: IZINQUBO ZOKUCELA UKUTHOLA IREKHODI LE-SARB
NGOKWEMIGOMO YESIGABA 18 YE-PAIA NOMA UKUTHOLA ULWAZI
LOMUNTU NGOKWEMIGOMO YESIGABA 23 SE-POPIA**

- 4.1 Umuntu (umfaki-sicelo) ofisa ukuthola irekhodi ku-SARB angenza kanjalo:
 - 4.1.1 ngokugcwalisa ifomu elilungiselelwe, elingatholakala kule mithombo elandelayo:
 - 4.1.1.1 ISekela Lesikhulu Sezolwazi se-SARB (Bheka Isahluko 2 ngenhla);
 - 4.1.1.2 Umqondisi Wezolwazi; noma
 - 4.1.1.3 kuwebhusayithi ye-Department of Justice and Constitutional Development, www.doj.gov.za; kanye
 - 4.1.2 nokukhokha imali(izimali) enqunyiwe. Nokho, umfaki-sicelo ofisa ukuthola irekhodi elinolwazi lwakhe, akudingeki akhokhe imali yesicelo.
- 4.2 Ngemva kokuba ISekela Lesikhulu Sezolwazi selenze isinqumo ngesicelo, umfaki-sicelo uzokwaziswa ngaleso sinqumo ngendlela ecelwe umfaki-sicelo.
- 4.3 Umfaki-sicelo kumele abonise ukuthi iyadingeka yini ikhophi yamarekhodi noma uma umfaki-sicelo engathanda ukuhlola amarekhodi emahhovisi e-SARB.
- 4.4 Ukuthola irekhodi elishiwo ngenhla kuzodluliselwa kumfaki-sicelo ngendlela eceliwe, ngaphandle uma leyo ndlela izophazamisa ngokungafanele indlela yokusebenza ye-SARB noma izolimaza amarekhodi ayo noma ingenele kabi amalungelo obunikazi.
- 4.5 Uma, ngenxa yezizathu ezizwakalayo ulwazi lungenakunikezwa ngendlela eceliwe, kodwa lunganikezwa ngenye indlela, khona-ke izindleko zizobalwa ngokuhambisana nendlela yokuthola lolu lwazi ecelwe umfaki-sicelo ekuqaleni.
- 4.6 Uma umfaki-sicelo engakwazi ukufunda nokubhala, noma enokukhubazeka, khona-ke umfaki-sicelo angenza isicelo sokuthola amarekhodi ngomlomo, lapho-ke ISekela Lesikhulu Sezolwazi lizogcwalisela umfaki-sicelo ifomu elilungiselelwe futhi sinikeze umfaki-sicelo lelo fomu eligcwalisiwe.
- 4.7 Umfaki-sicelo kumele aphawule ngokucacile efomini lesicelo:
 - 4.7.1 uma efisa ukwaziswa ngokuphumelela kwesicelo sakhe ngocingo, ngencwadi ebhaliwe noma nganoma iyiphi enye indlela; kanye
 - 4.7.2 nesikhundla sowenza isicelo uma kwenzeka ulwazi lucelwa egameni lothile (isb. ummeli).

ISAPHLUKO 5: IZINQUBO ZOKUPHIKISA UKUCUTSHUNGULWA KOLWAZI LOMUNTU NGOKWEMIGOMO YESIGABA 11(3) YE-POPIA

- 5.1 Umuntu (Umninilwazi njengoba echazwe ku-POPIA) ofisa ukuphikisa ukucutshungulwa kolwazi lomuntu yi-SARB, angakwenza:
 - 5.1.1 ngokugcwalisa ifomu elilungiselelwe, elingatholakala kule mithombo elandelayo:
 - 5.1.1.1 ISekela Lesikhulu Sezolwazi Segembu Le-SARB (Bheka Isahluko 2 ngenhla);
 - 5.1.1.2 kuwebhusayithi Yomlawuli Wezolwazi; noma
 - 5.1.1.3 kuwebhusayithi ye-Department of Justice and Constitutional Development, www.doj.gov.za; kanye
 - 5.1.2 nokukhokha imali(izimali) enqunyiwe, uma kusebenza.
- 5.2 Ngemva kokuba ISekela Lesikhulu Sezolwazi selenze isinqumo mayelana nokuphikisa, umninilwazi uzokwaziswa ngaleso sinqumo ngendlela ecelwe umninilwazi.
- 5.3 Umninilwazi kumele aphawule ngokucacile efomini lokuphikisa:
 - 5.3.1 uma efisa ukwaziswa ngokuphumelela kokuphikisa kwakhe ngencwadi ebhaliwe noma nganoma iyiphi enye indlela; kanye
 - 5.3.2 nesikhundla sophikisayo uma kuwukuthi ukuphikisa kwenziwa egameni lomunye umuntu (isib. ummeli).

ISAHLUKO 6: IZINQUBO ZOKULUNGISA, UKUSUSA NOMA UKUSHABALALISWA KOLWAZI LOMUNTU NOMA IREKHODI NGOKUHAMBISANA NESIGABA 24(1) SE-POPIA

- 6.1 Umuntu (Umninilwazi njengoba echazwe ku-POPIA) ofisa ukucela ukulungiswa noma ukususwa kolwazi noma ukushabalaliswa noma ukususwa kwerekhodi lolwazi lomuntu angakwenza:
- 6.1.1 ngokugcwalisa ifomu elilungiselelwe, elingatholakala kule mithombo elandelayo:
- 6.1.1.1 ISekela Lesikhulu Sezolwazi Seqembu Le-SARB (Bheka Isahluko 2 ngenhla);
- 6.1.1.2 kuwebhusayithi Yomlawuli Wezolwazi; noma
- 6.1.1.3 kuwebhusayithi ye-Department of Justice and Constitutional Development, www.doj.gov.za; kanye
- 6.1.2 nokukhokha imali(izimali) enqunyiwe, uma kusebenza.
- 6.2 Ngemva kokuba Isikhulu Sezolwazi sesenze isinqumo ekulungisweni noma ekususweni kolwazi lomuntu noma ekushabalalisweni noma ekudilithweni kwerekhodi lolwazi lomuntu, umninilwazi uzokwaziswa ngaleso sinqumo ngendlela ecelwe ngumninilwazi.
- 6.3 Umninilwazi kumele aphawule ngokucacile efomini lokuphikisa:
- 6.3.1 uma efisa ukwaziswa ngokuphumelela kwesicelo sakhe ngencwadi ebhaliwe noma nganoma iyiphi enye indlela; kanye
- 6.3.2 nesikhundla sophikisayo uma kuwukuthi ukuphikisa kwenziwa egameni lomunye umuntu (isb. ummeli).

ISAPHLUKO 7: IZINTO I-SARB ENAMAREKHODI AZO NEMIKHAKHA YAMAREKHODI AGCINIWE NGALEYO NTO

Ngezansi kuchazwe amarekhodi agcinwa yi-SARB, abekwe ngemikhakha, ukuze kube lula ukuwathola:

7.1 Okubhaliwe

- 7.1.1 Ulwazi oluvamile oluphathelene ne-SARB, igunya layo nemisebenzi
- 7.1.2 Izinkulumo zomphakathi, imibiko yabezindaba nemibiko yomphakathi
- 7.1.3 Izinkulumo zabaphathi abakhulu

7.2 Izitatimende Zezimali

- 7.2.1 Imibiko Yezimali Yonyaka
- 7.2.2 Izitatimende Zezimpahla Nezikweletu

7.3 I-SARB Shareholding

- 7.3.1 Ulwazi oluvamile olumayelana namasheya e-SARB
- 7.3.2 I-Share Register

7.4 Inqubomgomo Yezezimali

- 7.4.1 Ulwazi oluvamile oluphathelene Nenqubomgomo Yezezimali kanye Nekomidi Yenqubomgomo Yezezimali
- 7.4.2 Ukubukezwa Kwenqubomgomo Yezezimali
- 7.4.3 Ukusebenza Kwenqubomgomo Yezezimali

7.5 Izimakethe Zezimali

- 7.5.1 Imisebenzi Kamgcinimafa
- 7.5.2 Ukulawulwa Kwezimali Ezigciniwe
- 7.5.3 Ukulawula Ukulahlekelwa
- 7.5.4 Ukusebenza Kwezimakethe
- 7.5.5 Ucwangingo Lwezimakethe
- 7.5.6 Utshalo-zimali Kuma-Foreign Portfolio
- 7.5.7 Ama-Market rate

7.6 I-Bank Supervision (PA)

- 7.6.1 Ulwazi emkhakheni Wamabhange AseNingizimu Afrika
- 7.6.2 Imibiko ehlobene nokuphenya noma ukuthuthukiswa okuyinhloko

7.7 Ukushintshana Kwezimali Zakwamanye Amazwe

- 7.7.1 Ukugadwa Kwezimali
- 7.7.2 Ukusebenza kokushintshana kwezimali zakwanye amazwe
- 7.7.3 I-Correspondent Banking
- 7.7.4 Imithethonqubo Elawula Ukushintshaniswa, Iziyalo Nemithetho

7.8 Izimali Zomphakathi

- 7.8.1 Ukuqondiswa kwama-akhawunti nezinkokhelo

7.9 Izinhlelo Zokukhokha

- 7.9.1 Izinhlelo Zokukhokha Nokuvala Isikweletu
- 7.9.2 I-South African Multiple Option Settlement (SAMOS) System

7.10 Imali eyiphepha newuhlamvu

- 7.10.1 Imali eyiphepha YaseNingizimu Afrika
- 7.10.2 Uhlamvu lwemali laseNingizimu Afrika
- 7.10.3 Izinhlamvu zemali eziyigolide

7.11 Uzinzo Lwezezimali

- 7.11.1 Umthethonqubo Onokuqonda
- 7.11.2 *Ukuhlola Uzinzo Lwezezimali*
- 7.11.3 Umbiko Wozinzo Lwezezimali

7.12 Imibiko Ngezibalo Nezomnotho

- 7.12.1 Ulwazi Ngezibalo Nezomnotho
- 7.12.2 Izitatimende Zezindlela Zokwenza
- 7.12.3 *I-Bulletin Ephuma Njalo Ezinyangeni Ezintathu*
- 7.12.4 Imibiko yomnotho yonyaka
- 7.12.5 Imibiko Yocwaningo
- 7.12.6 Ucwangingo Lwezimakethe

7.13 Ulwazi lomuntu

- 7.13.1 Ulwazi lwabasebenzi nolomninilwazi
- 7.13.2 Ulwazi olukhethekile lwezisebenzi nolomninilwazi

7.14 Umshwalense Wokufaka Imali Nesinqumo

- 7.14.1 Ulwazi lwezikhungo eziqokiwe oluphathelele nomshwalense wokufaka imali nesinqumo.

ISAPHEKULO 8: IMIKHAKHA YAMAREKHODI ATHOLAKALA NGOKUZENZAKALELAYO

Ulwazi olungezansi luyatholakala Endlunkulu ye-SARB noma kuwebhusayithi ye-SARB futhi lungatholakala kalula ngaphandle kokulandela inqubo yokufaka isicelo se-PAIA.

- 8.1 Izishicilelo ze-SARB (Lonke ulwazi olukhishelwe umphakathi kuwebhusayithi ye-SARB ethi www.resbank.co.za).
- 8.2 Izitatimende Zezimali Zonyaka
- 8.3 Amasheya E-SARB
- 8.4 Ikomidi Yenqubomgomo Yezezimali
- 8.5 Izibalo Zezomnotho
- 8.6 Imibiko Yezomnotho
- 8.7 Ucwangingo Lwezimakethe
- 8.8 Ukushintshana Kwezimali Zakwamanye Amazwe
- 8.9 Izinhlalo Zokukhokha
- 8.10 Imali eyiphepha newuhlamvu

ISAPHLUKO 9: AMASEVISI ANGATHOLWA NGAMALUNGU OMPHAKATHI

Amasevisi alandelayo angatholwa ngamalungu omphakathi.

- 9.1 Ukukhokhelwa imali eyiphepha edabukile noma elimele. (Amalungu omphakathi afuna ukushintsha imali eyiphepha edabukile kanye/noma ukushintsha imali eyiphepha endala engasasetshenziswa ngeke esakwazi ukuthola lamasevisi eNdlunkulu ye-SARB ngenxa yomsebenzi wokwakha owenziwayo. Amakhasimende anama-akhawunti asebhange angathola la masevisi angenhla emagatsheni akhethiwe amabhange ezentengiselwano. Thola uhlu lapha: <https://bit.ly/3SQcN73>)
- 9.2 Ilungiselelo lamasevisi okuthenga ngokoqobo amasheya e-SARB (umphakathi ungathenga amasheya ku-SARB). Uma unemibuzo, sicela uthinte Unobhala Wokudluliswa Kwamasheya ku-OTCSTF@resbank.co.za.
- 9.3 Umkhankaso wokuqwashisa umphakathi (imikhankaso evamile yabemisakazo yokuqwashisa umphakathi ngama-419 scam, ama-ponzi scheme nemikhuba ehlukekizayo). Lolu lwazi lungatholakala kuwebhusayithi ye-SARB ethi www.resbank.co.za.

ISAPHLUKO 10: UKUBAMBA IQHAZA KOMPHEKATHI

Ngenjongo yokuvumela umphakathi ubambe iqhaza ekwakheni inqubomgomo nokusebenzisa amandla e-SARB, kwenziwe amalungiselelo alandelayo:

10.1 I-Prudential Authority

- 10.1.1 I-Standing Committee for the Revision of the Banks Act ibhekelele ukubamba iqhaza kwezinhlangano ezihlukahlukene ezimelelwe ekusungulweni kwemithethonqubo yebhange.
- 10.1.2 I-Policy Board for Financial Services and Regulation inikeza izinhlangano ezihlukahlukene ezimelelwe inkundla yokuphonsa esivivaneni uvo mayelana nezindaba zokulawula.

10.2 Uhlelo Lukazwelonke Lokukhokha

- 10.2.1 IKomidi Elimisiwe Lokubuyezwa KoMthetho 78 Wezinhlelo Zokukhokha Zikazwelonke Ka-1998 (Umthetho we-NPS).
- 10.2.2 IKomidi Elimisiwe lasungulelwa ukubukeza ukuthuthukiswa Kohlelo Lukazwelonke Lokukhokha (National Payment System - NPS) nokuqinisekisa ukuthi Umthetho i-NPS inikeza i-SARB amandla anele okulawula ukuze ilawule ukuphepha nokusebenza kahle kohlelo lokukhokha.

ISAPHLUKO 11: IZIXAZULULO EZITHOLAKALAYO KUMFAKI-SICELO

- 11.1 Umfaki-sicelo okhalazayo ngesinqumo Sesikhulu Sezolwazi se-SARB:
 - 11.1.1 Ukunika imvume yesicelo sokuthola imininingwane; noma
 - 11.1.2 uma kusetshenziswa imigomo yesigaba 22, 26(1) noma u-29(3) se-PAIA, angase afake isicelo, phakathi nezinsuku ezingu-30, ENkantolo ukuze athole usizo ngokuvumelana nemigomo yesigaba 82 se-PAIA.
- 11.2 I-SARB ayinazo izinqubo zangaphakathi zokubukeza noma zokukhalaza.

ISAPHLUKO 12: IZIXAZULULO EZINGATHOLWA NGUMNINILWAZI

- 12.1 Umninilwazi okhalazayo ngesinqumo Sesikhulu Sezolwazi se-SARB:
 - 12.1.1 ngemva kokuphikisa isicelo sokuthola ulwazi lomuntu; noma
 - 12.1.2 ngokuphathelene nesicelo sokulungisa noma sokususwa kolwazi lomuntu noma ukushabalaliswa noma ukususwa kwerekhodi lolwazi lomuntu; noma
 - 12.1.3 ngokuphathelene nokwenqaba isicelo sokuthola ulwazi lomuntu – angafaka isimangalo kuMlawuli Wezolwazi ngendlela enqunywe kusengaphambili futhi aveze izinsolo zokuphazanyiswa kokuvikelwa kolwazi lomuntu ngokwalokho okushiwo yisigaba 74(1) se-POPIA.
- 12.2 Lapho ethola isimangalo ngokuvumelana nesigaba 74 se-POPIA, uMlawuli angase enze uphenyo noma anqume ukuthi asikho isinyathelo esizothathwa noma adlulisele udaba ku-Enforcement Committee, futhi kunoma yikuphi, uMlawuli uzokwazisa ummangali nalabo abahilelekile esimangalweni ukuthi yisiphi isinyathelo uMlawuli ahlongoza ukusithatha.

UKUTHOLAKALA KWALE MANUWALI

Amakhophi ale Manuwali ayatholakala ukuze ahlolwe, mahhala, emahhovisi abhalisiwe e-SARB e-Irene Link, 13 Impala Avenue, Doringkloof, Centurion, 0157 noma angatholakala kuwebhusayithi ye-SARB ethi www.resbank.co.za.

UKUZIHLANGULA:

Le Manuwali ibhekwa njengeyiqiniso nenembile ngesikhathi eshicilelwe ngaso, nokho, ushintsho nezibuyekezo endleleni okuhlelwe ngayo i-SARB Group ngemva kokuba le Manuwali isishicilelwe, lungase lube nomthelela ekunembeni nasekuthembekeni kweManuwali.

AMAFOMU ANQUNYWE KUSENGAPHAMBILI

UKUPHIKISA UKUCUTSHUNGULWA KOLWAZI LOMUNTU

NGOKUHAMBISANA NEMIGOMO YESIGABA 11(3) YEMITHETHONQUBO YE-POPIA
EPHATHELENE NOKUVIKELWA KOLWAZI LOMUNTU, 2018

[Umthethonqubo 2]

Phawula:

1. *Ama-affidavit noma amanye amadokhumenti obufakazi asebenzayo ekusekeleni ukuphikisa nawo angafakwa.*
2. *Uma isikhala esinikezwe kuleli Fomu singenele, thumela ubufakazi njengeSenezelo kuleli Fomu bese usayina ikhasi ngalinye.*
3. *Gcwalisa lokho okufanele.*

A	IMININGWANE YOMNINILWAZI
Igama(amagama) nesibongo/ igama elibhalisiwe lomninilwazi:	
Isibonakaliso sakho wedwa/Inombolo Kamazisi	
Ikheli lendawo yokuhlala, leposi noma lebhizinisi:	
	Ikhodi ()
Inombolo (izinombolo) yocingo:	
Inombolo Yefeksi/ikheli le- imeyili:	
B	IMININGWANE YALABO ABAHILELEKILE
Igama (amagama) nesibongo/ Igama elibhalisiwe lohilelekile:	
Ikheli lendawo yokuhlala, leposi noma lebhizinisi:	
	Ikhodi ()

Inombolo (izinombolo) yocingo:	
Inombolo Yefeksi/ikheli le-imeyili:	
C	IZIZATHU ZOKUPHIKISA NGOKUVUMELANA NEMIGOMO YESIGABA 11(1)(d) kuya ku-(f) (Sicela unikeze izizathu eziningiliziwe zokuphikisa)

Kusayinwe _____ ngalolu _____ suku luka- _____ 20__

Isignesha yomnini/wazi/umuntu okhethiwe

IFOMU 2

ISICELO SOKULUNGISA NOMA SOKUSUSWA KOLWAZI LOMUNTU NOMA UKUSHABALALISA NOMA UKUSUSA IREKHODI LOLWAZI LOMUNTU NGOKUVUMELANA NEMIGOMO YESIGABA 24(1) SOMTHETHO WOKUVIKELWA KOLWAZI LOMUNTU, KA-2013 (UMTHETHO NO. 4 KA-2013)

IMITHETHONQUBO EPHATHELENE NOKUVIKELWA KOLWAZI LOMUNTU, KA-2018

[Umthethonqubo 3]

Phawula:

1. *Ama-affidavit noma amanye amadokhumenti obufakazi ahambisana nesicelo angafakwa.*
2. *Uma isikhala esinikezwe kuleli Fomu singenele, thumela ubufakazi njengeSenezelo kuleli Fomu bese usayina ikhasi ngalinye.*
3. *Gcwalisa lokho okufanele.*

Phawula ibhokisi elifanele ngo-"x":

Isicelo simayelana:

Nokulungisa noma ukususwa kolwazi lomuntu oluphathelele nomniniwazi olusezandleni noma olulawulwa yilabo abahilelekile.

noma

Nokushabalalisa noma ukususa irekhodi lolwazi lomuntu oluphathelele nomniniwazi olusezandleni noma olulawulwa yilabo abahilelekile abangasagunyaziwe ukugcina lelo rekhodi lolwazi.

A	IMININGWANE YOMNINILWAZI
Igama(amagama) nesibongo/ igama elibhalisiwe lomniniwazi:	
Isibonakaliso sakho wedwa/Inombolo Kamazisi:	
Ikheli lendawo yokuhlala, leposi noma lebhizinisi:	
	Ikhodi ()
Inombolo (izinombolo) yocingo:	
Inombolo Yefeksi/ikheli le-imeyili:	
B	IMININGWANE YALABO ABAHILELEKILE

Okungebucayi

Igama(amagama) nesibongo/ Igama elibhalisiwe lohilelekile:	
Ikheli lendawo yokuhlala, leposi noma lebhizinisi:	
	Ikhodi ()
Inombolo (izinombolo) yocingo:	
Inombolo Yefeksi/ikheli le-imeyili:	
C	ULWAZI OKUDINGEKA ULUNGISWE/LUSUSWE/LUSHABALALISWE/ LUBHUJISWE
D	<p>IZIZATHU *ZOKULUNGISA NOMA ZOKUSUSA ULWAZI LOMUNTU OLUPHATHELENE NOMNINILWAZI NGOKUPHATHELENE NEMIGOMO YESIGABA 24(1)(a) OLUSEZANDLENI NOMA OLULAWULWA YILABO ABAHILELEKILE; KANYE/NOMA</p> <p>IZIZATHU *ZOKUSHABALALISA NOMA ZOKUSUSA IREKHODI LOLWAZI LOMUNTU OLUPHATHELENE NOMNINILWAZI NGOKUHAMBISANA NEMIGOMO YESIGABA 24(1)(b) LOWO OHILELEKILE ANGASAVUNYELWE UKULUGCINA.</p> <p><i>(Sicela unikeze izizathu eziningiliziwe zesicelo)</i></p>

Kusayinwe _____ ngalolu _____ suku luka- _____ 20__

Isignesha yomninilwazi/umuntu okhethiwe _____

ISHEJULI 1**Imali enqunywe kusengaphambili****INGXENYE II YE-ANNEXURE A KU-G.N. R187 ESHICILELWE KU-GOVERNMENT GAZETTE
23119 KA-15 FEBRUARY 2002****INKOKHISO NGOKUPHATHELENE NEZINHLANGANO ZOMPHAKATHI**

1. Imali yekhophi yemanuwali njengoba kuphakanyiswe kumthethonqubo 5(c) ingu-R0,60 ikhophi ngayinye yekhasi eliwubukhulu obungu-A4 noma ingxenye yalo.
2. Imali yokukhiqiza kabusha okubhekiselwa kuyo kumthethonqubo 7(1) injengoba ibekwe ngokulandelayo (I-Value Added Tax ("VAT") ayifakiwe):

(a)	Ikhophi ngayinye yekhasi lobukhulu obungu-A4 noma ingxenye yalo	R0,60
(b)	Ikhophi ngayinye ephrintiwe yekhasi lobukhulu obungu-A4 noma ingxenye yalo eligcinwe kukhompuyutha noma ngendlela yezobuchwepheshe noma ngendlela engafundwa ngumshini	R0,40
(c)	Ikhophi efundeka kukhompuyutha:	
(i)	ku-stiffy disc	R5,00
(ii)	ku-compact disc	R40,00
(d)(i)	Ukuchaza isithombe ngamagama, kwekhasi lobukhulu obungu-A4 noma ingxenye yalo	R22,00
(ii)	Ikhophi yemifanekiso	R60,00
(e)(i)	Ukuchaza ngamagama irekhodi elilalelwayo, kwekhasi lobukhulu obungu-A4 noma ingxenye yalo	R12,00
(ii)	Ikhophi yerekhodi elilalelwayo	R17,00
3. Imali yesicelo ekhokhwa umfaki-sicelo ngamunye, okungeyena umfaki-sicelo ongumnikazi, okubhekiselwa kuyo kunqubomthetho 7(2) ingu-R35,00 (ingafakiwe i-VAT).
4. Imali yokufinyelela ulwazi ekhokhwa umfaki-sicelo okubhekiselwa kuyo kunqubomthetho 7(3) injengoba ibekwe ngokulandelayo (ingafakiwe i-VAT):

- | | | |
|--------|---|--------|
| (1)(a) | Ikhophi ngayinye yekhasi lobukhulu obungu-A4 noma ingxenye yalo | R0,60 |
| (b) | Ikhophi ngayinye ephrintiwe yekhasi lobukhulu obungu-A4 noma ingxenye yalo eligcinwe kukhompyutha noma ngendlela yezobuchwepheshe noma ngendlela engafundwa ngumshini | R0,40 |
| (c) | Ikhophi efundeka kukhompyutha: | |
| (i) | ku-stiffy disc | R5,00 |
| (ii) | ku-compact disc | R40,00 |
| (d)(i) | Ukuchaza isithombe ngamagama, kwekhasi lobukhulu obungu-A4 noma ingxenye yalo | R22,00 |
| (ii) | Ikhophi yemifanekiso | R60,00 |
| (e)(i) | Ukuchaza ngamagama irekhodi elilalelwayo, kwekhasi lobukhulu obungu-A4 noma ingxenye yalo | R12,00 |
| (ii) | Ikhophi yerekhodi elilalelwayo | R17,00 |
| (f) | Ukucinga nokulungisa amarekhodi ukuze adalulwe, R15, 00 ihora ngalinye noma ingxenye yehora, ngaphandle kwehora lokuqala, okudingekayo ngokunengqondo ukuze kwenziwe lokho kucinga nokulungiselela. | |
| (2) | Ngokwenjongo yesigaba 22(2) se-PAIA, okulandelayo kuyasebenza: | |
| (a) | Amahora ayisithupha njengamahora okudingeka adlule ngaphambi imali efakiwe ikhokhwe; kanye | |
| (b) | Nengxenye eyodwa kwezintathu ekhokhelwa ukufinyelela ulwazi ikhokhwa njengediphozithi ngumfaki-sicelo. | |
| (3) | Izindleko zeposi ziyakhokhelwa lapho ikhophi ye-rekhodi kumele iposelwe umfaki-sicelo | |

ISHEJULI 2

AMAFOMU ANQUNYWE KUSENGAPHAMBILI OKUTHOLA AMAREKHODI

Amafomu Anqunywe Kusengaphambili okuthola irekhodi ashicilelwe lapha:

**ISENEZELO B SE-GOVERNMENT NOTICE R.187 ESISHICILELWE KU-GOVERNMENT GAZETTE
23119 KA-15 FEBRUARY 2002 IFOMU A**

ISICELO SOKUTHOLA AMAREKHODI IZINHLANGANO ZOMPHAKATHI

(Isigaba 18(1) soMthetho Wokukhuthaza Ukutholakala Kolwazi, Ka-2000

(Umthetho No. 2 ka-2000))

[Umthethonqubo 6]

OKOKUSETSHENZISWA
NGUMNYANGO
KUPHELA

Isicelo sitholwe ngu-(yisho isikhundla, igama nesibongo sesikhulu solwazi/isekela lesikhulu sezolwazi)

Imali yokufaka isicelo (uma ikhona) : R

Idiphozithi R

Imali R

ISIGNESHA NOMA IMINININGWANE YESIKHULU SEZOLWAZI/ISEKELA LESIKHULU

A. Imininingwane yenhlangano yomphakathi

Isikhulu Sezolwazi/Isekela Lesikhulu Sezolwazi.

B. Imininingwane yomuntu ofaka isicelo sokuthola amarekhodi

- (a) *Imininingwane yomuntu ofaka isicelo sokuthola amarekhodi kumele ifakwe ngezansi.*
- (b) *Nikeza ikheli kanye/noma inombolo yefeksi kuRiphabliki okumelwe imininingwane ithunyelwe kuyo.*
- (c) *Ubufakazi besikhundla isicelo esenziwa ngaso, uma sikhona, kumele sifakwe.*

Amagama aphelele nesibongo:

Inombolo kamazisi:

Ikheli leposi:

Inombolo yefeksi:

Inombolo yocingo:

Ikheli le-imeyili:

Isikhundla isicelo esenziwa ngaso, lapho senziwa egameni lomunye umuntu:

C. Imininingwane yomuntu okwenziwa isicelo egameni lakhe

Le sigaba kumele sigcwaliswe KUPHELA uma isicelo sokuthola ulwazi senziwa egameni lomunye umuntu.

Amagama aphelele nesibongo:

Inombolo kamazisi:

D. Imininingwane yamarekhodi

- (a) *Nikeza imininingwane ephela yamarekhodi okwenziwa isicelo sokuwathola, kuhlenganise nenombolo yereferensi uma uyazi, ukuze amarekhodi atholakale kalula.*
- (b) *Uma isikhala esinikeziwe singenele sicela uqhubeke ephepheni eliseceleni bese ulinamathisela kuleli fomu. **Umfaki-sicelo kumele asayine wonke amaphepha engeziwe.***

- 1 Incazelo yamarekhodi noma yengxenywe yerekhodi edingekayo:
- 2 Inombolo yereferensi, uma ikhona:
- 3 Eminye imininingwane yerekhodi:

E. Imali

- (a) *Isicelo sokuthola irekhodi, ngaphandle kwerekhodi eliqukethe imininingwane yakho siqu, sizocutshungulwa kuphela ngemva kokuba imali yokufaka isicelo isikhokhiwe.*
- (b) *Uzokwaziswa ngesamba okudingeka sikhokhwe njengemali yokufaka isicelo.*
- (c) *Imali ekhokhwa ukuze uthole irekhodi incike ekutheni ukuthola irekhodi kufuneka ngayiphi indlela kanye nesikhathi esamukelekayo sokucinga nokulungisa lelo rekhodi.*
- (d) *Uma ufanelekela ukungakhokhiswa imali, sicela usho isizathu salokho.*

Isizathu sokungakhokhiswa imali:

F. Uhlobo amarekhodi okumelwe abe yilo

Uma ngenxa yokukhubazeka ungakwazi ukufunda, ukubuka noma ukulalela amarekhodi ohlotsheni athunyelwe eyilo oluboniswe ku-1 ukuya ku-4 ngezansi, yisho ukukhubazeka kwakho futhi ubonise uhlobo amarekhodi adingeka ngalo.

Ukukhubazeka	Uhlobo amarekhodi adingeka ngalo:
<p><i>Phawula ibhokisi elifanele ngo-X.</i></p> <p>UKUPHAWULA:</p> <ol style="list-style-type: none"> (a) <i>Ukuhambisana nohlobo lwamarekhodi ocele ukuwathola eyilo kuncike ekutheni amarekhodi atholakala eyiluphi uhlobo.</i> (b) <i>Isicelo sohlobo olucelwayo singanqatshwa ezimweni ezithile. Kuleso simo uyotshelwa ukuthi ungalithola yini irekhodi ngolunye uhlobo.</i> (c) <i>Imali ekhokhwayo ukuze uthole amarekhodi, uma ikhona, ngokwengxenywe izonqunywa wuhlobo irekhodi elicelwa ngalo.</i> 	

1. Uma amarekhodi ewuhlobo olubhaliwe noma oluphrintiwe:			
	ikhophi yerekhodi *		ukuhlolwa kwerekhodi
1. Uma irekhodi linemifanekiso - (lokhu kubandakanya izithombe, amaslayidi, amavidiyo, izithombe ezenziwe ngekhompyutha, izikeshi, njll.):			
	buka imifanekiso	amakhophi emifanekiso *	ukuchazwa ngamagama kwemifanekiso*
2. Uma amarekhodi enamazwi noma ulwazi olungakhishwa kabusha njengento elalelwayo:			
	lalela i-sound track (ikhasethi elilalelwayo)		ukuchazwa ngamagama kwe-sound track * (idokhumenti ebhaliwe noma ephrintiwe)
3. Uma amarekhodi egcinwe kuyikhompyutha noma ngohlobo lobuchwepheshe noma olungafundwa wumshini:			
	ikhophi ephrintiwe yerekhodi *	ikhophi ephrintiwe yolwazi olutholwe kurekhodi *	ikhophi ewuhlobo olungafundwa yikhompyutha *(i-stiffy noma i-compact disc)
* Uma ufake isicelo sekhophi noma sokuchazwa kwerekhodi ngamagama (ngenhla), uyafuna yini ukuba ikhophi noma ukuchazwa ngamagama kwerekhodi kuposelwe kuwe? Iposi liyakhokhelwa.		YEBO	CHA
<i>Phawula ukuthi uma amarekhodi engatholakali ngolimi oluthandayo, ukuthola amarekhodi kunganikezwa ngolimi atholakala ngalo. Ungathanda ukuwathola ngaluphi ulimi amarekhodi?</i>			

G. Isaziso sesinqumo mayelana nesicelo sokuthola ulwazi

Uzokwaziswa ngencwadi ukuthi isicelo sakho sivunyelwe/senqatshelwe yini. Uma ufisa ukutshelwa ngalokhu ngenye indlela, sicela ucacise leyo ndlela futhi unikeze imininingwane edingekayo ukuze kuhanjiswa nesicelo sakho.

Ungathanda ukutshelwa ngayiphi indlela ngesinqumo sesicelo sakho sokuthola amarekhodi?

KUSAYINWE _____ ngalolu _____ suku luka- _____ 20_____.

**ISIGNESHA YOMFAKI-SICELO/YOMUNTU
OKWENZIWA ISICELO EGAMENI LAKHE**