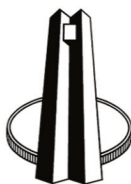


South African Reserve Bank Working Paper

The Rand as a Carry Trade Target: Risk, Returns and Policy Implications

Shakill Hassan and Sean Smith

Working Papers describe research in progress and are intended to elicit comments and contribute to debate. The views expressed are those of the author(s) and do not necessarily represent those of the South African Reserve Bank or Reserve Bank policy. While every precaution is taken to ensure the accuracy of information, the South African Reserve Bank shall not be liable to any person for inaccurate information or opinions contained herein.



South African Reserve Bank

South African Reserve Bank Working Paper
Research Department

The Rand as a Carry Trade Target: Risk, Returns and Policy Implications

Prepared by Shakill Hassan and Sean Smith ¹

Authorised for external distribution by Dr Chris Loewald

August 2011

Abstract

We analyze the returns to targeting the Australian, New Zealand and South African currencies, through Japanese yen-funded forward market speculation – with a particular focus on the South African rand. Targeting the rand through forward currency speculation generates returns which are as volatile, but with higher mean, and smaller probability of rare but large losses, than a buy-and-hold investment in the stock market – which is stochastically dominated in the second-order sense by the rand-targeting trade; and a larger return-to-volatility ratio than the Australian and New Zealand dollars – the most common carry targets. Foreign-exchange market turnover and debt flows driven by the carry trade cause gradual appreciations punctuated by infrequent but potentially large and rapid depreciations. The consequent level of currency instability is affected by whether inflows cause overheating, and how the central bank responds to the associated inflationary pressure. Reducing short-term rand volatility however, is likely to increase its allure as a carry target.

JEL classification: F31, G15, E58.

Keywords: Currency speculation; carry trade; forward premium; skewness and crash risk; exchange rate instability; capital flows

Corresponding author's e-mail address: Shakill.Hassan@ResBank.co.za

¹ This is a revised version of South African Reserve Bank Discussion Paper 11-03 (March 2011). With special thanks to Greg Farrell and Chris Loewald for extensive and detailed comments; to Lara Skelly for assistance with data collection; to an anonymous referee; to Nicola Brink, Anton Casteleijn, Brian Kahn, Eliphaz Ndou, Stan du Plessis, Logan Rangasamy, Lambertus Van Zyl and Nicola Viegi, for helpful discussions; and to seminar participants at the South African Reserve Bank, the ERSA Workshop on Monetary Economics and Macro-Modelling, the University of Cape Town (Economics), University of Pretoria (Economics), Wits University (Mathematical Finance), and the 2011 International Monetary Fund/RSA National Treasury/SARB joint workshop. Responsibility for any errors rests with the authors, of course.

Contents

1	Introduction	2
1.1	Background	2
1.2	This paper’s contribution	4
2	Data and currency speculation strategies	7
2.1	Data and spreads	7
2.2	Currency speculation strategies	8
2.2.1	Theoretic background for the speculation strategies	8
2.2.2	Carry trade without transaction costs	9
2.2.3	Carry trade with transaction costs	11
2.2.4	BGT regression-based strategy	11
2.2.5	BGT regression-based strategy with transaction costs	12
3	Results	13
3.1	Return and volatility	13
3.2	Crash risk	14
3.3	Carry trade versus the stock market	16
3.4	Stochastic dominance	18
4	Discussion	20
4.1	Rand attractiveness as a carry trade target	20
4.2	Effect of short-term volatility on carry trade returns	20
4.3	The carry trade and currency market instability	22
4.3.1	Up the stairs, down the elevator	22
4.3.2	Connection to monetary policy	24
4.4	Remark on the cost of reserve accumulation	25
5	Conclusion	25
6	References	26
7	Appendix	29
7.1	Appendix A: Data mnemonics and bid-ask spreads	29
7.2	Appendix B: Histograms, cumulative mass functions, and QQ plots	30

List of Figures

Figure 1: Cumulative payoffs from alternative carry targets	5
Figure 2: Cumulative payoffs: rand target vs JSE	17
Figure 3: Cumulative mass functions	19
Figure 4: Rand carry returns and exchange rate volatility	21
Figure 5: Rand-yen exchange rate	23

List of Tables

Table 1: Returns to naïve carry trade	13
Table 2: Returns to BGT-regression strategy	14
Table 3: Skewness and normality	15
Table 4: Stock market comparison	17

1 Introduction

1.1 Background

The forward premium anomaly (i.e., the finding that the forward exchange rate is a biased predictor of the future spot exchange rate) and associated empirical failure of the uncovered interest rate parity hypothesis at short horizons are well known and documented (Hansen and Hodrick (1980), Fama (1984), Froot and Thaler (1990), Taylor (1995), Engel (1996), Flood and Rose (2002), Chinn & Meredith (2004), Chinn (2006)).¹ Currencies either trading at a forward discount (resp., premium) or, equivalently, with a favourable (resp., unfavourable) interest differential, appreciate (depreciate) on average – though somewhat unpredictably.² We draw on recent research

¹The unbiased expectations hypothesis (UEH) states that the forward rate is an unbiased predictor of the future spot rate. This is equivalent to uncovered interest parity (which states that the interest rate differential between two countries is equal to the expected depreciation of the high-interest currency) under no arbitrage. Technically, the equivalence is ensured by the covered interest parity condition, as explained later in the paper. For an alternative view suggesting country-specific differences and partial support for the UEH, see the interesting contribution of Bansal and Dahlquist (2000). Wesso (1999) provides evidence on the failure of UEH for the South African rand.

²A currency is at a forward premium (resp., discount) if its forward value, in terms of another currency, is larger (lower) than its value in terms of the same currency, in the spot market – i.e. the forward exchange rate is lower (resp., higher) than the spot exchange rate, if the exchange rate is defined as units of domestic currency per unit of foreign currency.

which tests the economic significance of this empirical regularity by taking the perspective of a currency trader, and examining the profitability of treating the interest differential as expected return, rather than expected currency depreciation, using the currency forward market – i.e. of exploiting the forward premium anomaly, or short-term deviations from uncovered interest parity (UIP, henceforth).

Burnside, Eichenbaum, Kleshchelski and Rebelo (henceforth, BEKR) (2006) apply two currency speculation strategies: a "practitioner" or "naïve" carry trade strategy, and a regression-based strategy; each implemented through the forward foreign-exchange market, to ten developed country currencies and a portfolio of these currencies. They report the return properties of each strategy and find that each yields very high Sharpe ratios (the ratio of mean return to volatility of returns), and the returns are not correlated with common risk factors or monetary variables, but argue that although the returns are high, transaction costs (measured by bid-ask spreads) and the existence of price pressure in spot currency markets will reduce the speculator's profits to zero.

Two subsequent papers apply the same carry trade strategy to different sets of currencies. Burnside, Eichenbaum and Rebelo (BER henceforth) (2007) compare payoffs to the carry trade strategy applied to two portfolios. The first portfolio consists exclusively of developed countries, while the second adds a set of emerging markets to the first. Despite far higher transaction costs in these markets, including emerging-market targets increases the Sharpe ratio from the carry trade substantially – and above the United States stock market. The carry trade payoffs are uncorrelated with stock market returns.³ BER (2008) focus on a subset of the countries used in the previous study, including developed and emerging markets. They consider three variations on the carry trade strategy: an equally weighted carry portfolio; a currency-specific strategy; and a high-low strategy, taking a position only in the two currencies with the highest forward premium and discount. They show that the diversified portfolio produces a higher Sharpe ratio, mostly due to reduced volatility.

The South African rand is one of the currencies in BER's (2008) sample. The returns from individually targeting the South African rand documented in BER (2008: 584, Table 1) are indeed unattractive: the Sharpe ratio is substantially lower than when targeting the Japanese yen or the Swiss franc,

³They attribute the high Sharpe ratios of the developed country portfolios to transaction costs and microstructure frictions, but do not attempt to explain the large Sharpe ratios associated with the portfolios that include emerging markets.

which are widely regarded as lower-yielding but less volatile currencies. The rand-targeting strategy is also dominated by numerous alternative targets (including the yen), in the mean-variance sense – that is, rand-targeting offers lower mean returns *and* higher variance. Hence inclusion of the rand in a carry trade portfolio would be sub-optimal in the mean-variance optimisation sense. The study also reports a skewness statistic for the Swiss franc-targeting strategy of negative 0,612 (the lowest in their sample), indicating larger crash risk from investing in the franc than in the rand or any of the other 23 currencies in the study. (See BER, 2008: 587.) These findings are egregiously inconsistent with international reports indicating that the rand is a common carry trade target, while the Japanese yen and Swiss franc are common carry funding currencies.⁴

Targeting portfolios of imperfectly or negatively correlated currencies rather than individual currencies offers the benefit of diversification: a reduction in the variance of returns relative to mean returns, and thus improved Sharpe ratios. However, it is well known that rationalising the comparison of investments using the first two moments of the distribution of returns, requires that returns be jointly normally distributed, or investors' choices can be characterised by quadratic utility of money functions (Ingersoll, 1987: 95-97). Quadratic utility might be an inaccurate representation of traders' preferences, and the distribution of returns from the carry trade strategies in BER (2007) and BER (2008) are not Gaussian. BER (2007, 2008) also rely on the US dollar as funding currency, and the sample in BER (2007) does not include any currency crisis period.

1.2 This paper's contribution

We implement the currency speculation strategies in BER (2007) and BER (2008), plus a regression-based strategy in BEKR (2006), to focus on the returns and risk from targeting the rand, as well as the Australian and New Zealand dollars, which are the two most widely cited carry trade targets (Galati, Heath and McGuire (2007), Winters (2008)), plus the euro, for perspective. Historically the low interest rates in Japan make the yen a more natural funding currency for the carry trade than either the United States dollar or the British pound, and we thus use the yen as the funding

⁴See Galati, Heath and McGuire (2007), and Winters (2008). For financial press reports reflecting international market perceptions, see for example "Yen Rises to 13-Year High as Investors Exit High-Yield Assets," Bloomberg, 24 October 2008; "South Africa's Rand Posts Fifth Weekly Advance on Rate Premium," Bloomberg, 26 April 2008; and "Rand Gains on Bets Carry-Trade Allure to Continue," Bloomberg, 9 November 2010.

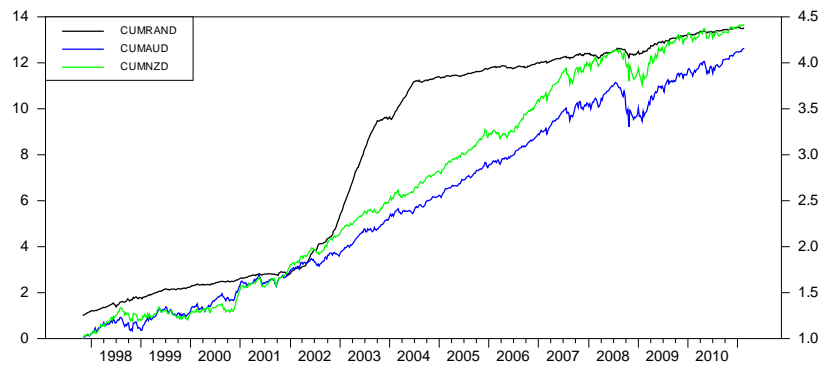
currency – Japanese interest rates over the past decade are a better proxy for the recent near-zero interest cost of funding the carry trade, using post-subprime crisis United States or United Kingdom rates.

We show that targeting the South African rand through the forward markets is historically highly profitable (on average), using either the naïve strategy or the regression-based strategy – the most profitable target in our sample. The figure below contrasts the cumulative payoffs from targeting the rand with the Australian and New Zealand currencies as carry targets (unit initial investment, rand payoff on the left hand scale).

Figure 1: Cumulative payoffs from alternative carry targets

CUMRAND: South African rand (left scale)

CUMAUD: Australian dollar; CUMNZD: New Zealand dollar



Over the same period and at the same frequency, the South African stock market, measured by the JSE Limited (JSE) All-Share Index (JSE Alsi, henceforth, which fund managers find difficult to consistently outperform⁵) produced lower mean returns, yet similar variance of returns – resulting in an annualised Sharpe ratio from the rand-targeting carry trade approximately four times larger than the JSE-Alsi. Moreover, the skewness from rand targeting in our currency speculation strategies is larger than that from a buy-and-hold investment in the JSE - indicating lower crash risk from the forward markets carry than the stock market. The return series are not Gaussian, so we compare the cumulative mass functions of the carry trade payoffs from the alternative targets to each other, and the

⁵See Bartens and Hassan (2010) and references therein.

rand target to the South African stock market. The rand targeting currency speculation strategy comfortably dominates stock market investment in the second-order stochastic dominance sense – that is, it is a more attractive investment for any risk-averse investor, irrespective of the steepness of the indifference curve representing her risk-return tolerance.

We conjecture that a significant portion of rand foreign exchange turnover and fixed income flows to South Africa are, at least periodically, due to the carry trade, and discuss the following issues of policy relevance.⁶ First, high short-term exchange rate volatility causes carry trade losses – domestically and internationally. Lower short-term/high-frequency rand volatility makes unhedged rand-targeting less risky, and reduces the cost of options-based hedged targeting. Hence, reducing the rand’s *short-term* volatility is likely to increase its appeal as a carry trade target. Second, the carry trade affects fixed-income portfolio flows, but such flows will only reflect a portion of total carry trade activity. Third, the rand being an attractive carry trade target affects the exchange rate path, contributing to deviations from long-term fundamentals. Specifically, we draw on recent literature on currency crashes, the limits to arbitrage, and slow-moving capital, and argue that

⁶The conjecture is based on necessarily indirect evidence of rand carry trade activity. Direct and comprehensive evidence of carry trade activity targeting any specific currency is difficult to obtain reliably. There are many ways to implement the trade, especially through derivatives, which may be off-balance sheet; reported on-balance sheet positions need not be related to carry trades; participants in the carry trade include unregulated non-bank financial institutions (especially hedge funds and commodity trading advisors); and the rand is heavily traded offshore. But it is possible to obtain indirect evidence. High correlation between foreign exchange turnover and the carry-to-risk ratio (the ratio of the interest-rate differential to expected exchange rate volatility), which is seen as an *ex-ante* measure of a currency’s carry appeal, suggests that turnover is related to carry trade implementation - indirect evidence of carry trade activity. Galati, Heath, and McGuire (2007) report a correlation of 0,36 for the rand, the third highest in their Bank for International Settlements database. In the second half of 2010, approximately 72 percent of total turnover in the South African currency market was attributable to non-residents. Currency derivative transactions (esp. swaps) far outweighed spot transactions; and the former were linked to non-resident activity in the domestic bond market. (SARB, 2011b.) The evidence from Turkey suggests that hedge funds and investment banks implementing carry trades are the main swap counterparties. (IMF, 2011.) As of June 2010, portfolio fixed-income flows to South Africa were primarily intermediated through a set of financial centres comprising Luxembourg, Jersey, Cayman, British Virgin Islands, Bermuda, Bahamas, and Liechtenstein (IMF, 2011) - jurisdictions where hedge funds (and off balance-sheet structured investment vehicles until recently) are typically domiciled. Interestingly, the largest net flows of yen between 2002 and 2007, were from Japan to the Caribbean financial centres, according to Bank for International Settlements data (see Galati, Heath and McGuire, 2007).

being an attractive carry trade target leads to an exchange rate process for the rand characterised by gradual appreciations (with small random disturbances around the path) when the rand turns into an alluring target, punctuated by infrequent but potentially large and rapid depreciations when, for example, global risk appetite changes or the yield differential turns unattractive, causing carry trade reversals. Inflation-targeting can exacerbate such destabilising events, if or when carry activity leads to overheating of the South African economy.

The remainder of the paper proceeds as follows. Section two describes the data, briefly gives the theoretic background for the source of the profitability of the carry trade, and explains the currency speculation strategies we implement, as well as their implications for capital flows. Section three presents the results. We compare the mean payoff, volatility, Sharpe ratio and skewness of each country-specific target, and discuss the extent to which crash risk explains the returns from the carry trade. We also use stochastic dominance for a distribution-free comparison of rand targeting with the stock market. Section four contains discussions on the relationship between exchange rate volatility and the returns from targeting the rand; the interaction between inflation-targeting monetary policy and speculators' actions; the implications of this interaction for exchange rate (in)stability; and a remark on the cost of foreign-exchange reserve accumulation.

2 Data and currency speculation strategies

2.1 Data and spreads

Our data are from Reuters Datastream and cover the period from 7 April 1997 to 21 February 2011, corresponding to 725 weekly observations for each exchange rate series. Details on mnemonics for specific series are contained in Appendix A. The time frame is approximately 14 years, which includes the South East Asian currency crisis beginning in the second half of 1997, as well as the sub-prime mortgage crisis beginning in the second half of 2007, both of which had substantially adverse effects on carry trade positions held prior to the event. The currencies included are those from: Australia, the euro area, Japan (the funding currency), New Zealand and South Africa. All the currencies in our sample are frequently used in the carry trade. (Galati, Heath, and McGuire, 2007, Winters, 2008.) The sample includes the two most widely cited carry trade targets, namely the Australian and New Zealand dollars, which are also, like the rand, regarded as commodity-driven currencies. The Japanese yen is used as the funding currency, and

the euro is included for comparison with carry targets.

The data set consists of spot and one-month forward exchange rates, and a benchmark stock market index for South Africa (Alsi), used to compare the risk of rand-target with that of a buy-and-hold investment in the stock market. The exchange rates are expressed in foreign currency units (FCUs) per Japanese yen.

The data include bid, offer and average prices. A participant in the interdealer market is able to buy and sell currency from a dealer (or, in the absence of dealers, after placing orders in a limit-order book) at the offer (or ask) and bid prices respectively. The use of bid-ask spreads reflects the implementation costs faced by currency traders and ensures that reported excess returns are not due to a failure to adjust for transaction costs.⁷ These spreads are exhibited in Appendix A. As expected, and consistent with BER (2007), the spreads for developed economy currencies are generally lower than emerging-market currency spreads.⁸ We calculate two measures of the spread: one in relative percentage terms as $[100 * \log(\text{Ask}/\text{Bid})]$, and the other in absolute terms. South Africa has a disproportionately large spread of 0,8304 per cent. We also observe that the bid-ask spreads are wider in forward markets than in spot markets. This is consistent with the findings in Burnside, Eichenbaum, Kleshchelski and Rebelo (2006).

2.2 Currency speculation strategies

Let S_t^a and S_t^b denote the ask and bid spot exchange rates respectively. Let F_t^a and F_t^b denote ask and bid forward exchange rates respectively, for forward contracts maturing at time $t + 1$. The variables S_t and F_t denote the averages of S_t^a and S_t^b , and of F_t^a and F_t^b respectively. We start with a compact treatment of the theoretic background for the carry trade through the currency forward market. We then consider four speculation strategies: two versions of the naïve carry trade strategy, and two versions of the regression-based strategy – each distinguished by how bid-ask spreads are treated.

2.2.1 Theoretic background for the speculation strategies

The well-known UIP hypothesis (we will abstract from bid-ask spreads for the moment) is that the interest differential equals expected depreciation,

⁷Note however that Reuters bid-ask spreads may be substantially larger than inter-dealer spreads (see Lyons (2001) and Lustig and Verdelhan (2009)).

⁸There is however substantial heterogeneity in spread size across currencies.

that is,

$$(1 + i_t)/(1 + i_t^*) = E_t S_{t+1}/S_t, \quad (1)$$

where i_t and i_t^* denote domestic and foreign interest rates respectively over one period. In the absence of arbitrage opportunities in the market, the covered interest parity condition must hold:

$$(1 + i_t)/(1 + i_t^*) = F_t/S_t. \quad (2)$$

The UIP hypothesis is therefore equivalent (in an arbitrage-free market) to a statement about the forward rate as the expected future spot rate:

$$F_t = E_t S_{t+1}. \quad (3)$$

Suppose that the target currency is trading at a forward discount (or the funding currency at a forward premium), $F_t > S_t$. From equation 3, this means that $E_t S_{t+1} > S_t$, that is, the target currency is expected to, and should on average, depreciate relative to the funding currency. It does not. Most empirical evidence shows that currencies at a forward discount (resp., premium) tend to appreciate (depreciate). Equivalently, high interest rate currencies tend to appreciate. (Hansen and Hodrick (1980), Fama (1984), Engel (1996), Chinn and Meredith (2004), Bergman and Hassan (2008).) Target currency appreciation, $S_{t+1} < S_t$, means that $F_t > S_{t+1}$, that is, ex-post, the forward rate for delivery at time $t + 1$ is larger than the spot rate at $t + 1$. The trading implication is straightforward: if the target currency is at a forward discount, $F_t > S_t$, buy the target currency (sell the funding currency) forward, and sell it (converting the proceeds back to the funding currency) at the future spot rate; if instead the target currency is at a forward premium, $F_t < S_t$, sell the target currency (buy the funding currency) forward, and buy it at the future spot rate.

2.2.2 Carry trade without transaction costs

This is the baseline naïve carry trade strategy, consisting simply of selling the currency forward when it is at a forward premium, and buying the currency forward when it is at a forward discount. Specifically, we sell x_t units of the funding currency forward according to the rule:

$$x_t = \begin{cases} +1 & \text{if } F_t \geq S_t, \\ -1 & \text{if } F_t < S_t. \end{cases} \quad (4)$$

When covered interest parity holds (and deviations from covered interest parity are small and rare – see for example Taylor (1987) and BEKR (2006):

4 and Appendix B), the payoff from this strategy is proportional (but larger due to fewer transactions) to the more popular understanding of the carry trade, that is, borrow the low interest funding currency, convert it to the target currency at the current spot rate, invest in the high-yielding currency, and then convert back at the future spot rate to repay the short position – benefiting from a favorable yield but facing the exchange rate risk.

The yen-denominated payoff at $t + 1$ from the speculative trade is given by:

$$z_{t+1} = x_t \left(\frac{F_t}{S_{t+1}} - 1 \right). \quad (5)$$

To see this, consider the case where $F_t > S_t$. The trade consists of using x_t units of the yen to buy $x_t F_t$ units of the target currency, delivered at $t + 1$, which are sold in the spot market at time $t + 1$ for $x_t F_t / S_{t+1}$. The payoff in yen is therefore as given by equation 5.

Observe that there is zero net investment at time t ; and the expected payoff to the speculator is always non-negative if $1/S_t$ is a martingale. That is, if $E_t(1/S_{t+1}) = 1/S_t$, then $E_t z_{t+1} = x_t (F_t/S_t - 1)$, and the non-negativity of the speculator’s expected payoff is ensured by the indicator function defining the trading strategy in equation 4.

Remark 1 (*Capital flows.*) *The zero net investment at time t means that there are no capital flows initiated by the speculator at time t . It does not mean that the implementation of the carry trade through the forward market does not cause immediate flows in the spot market. It does, but by the counterparty’s hedging, if done through the spot market. The counterparties, which are likely to include large local banks, take the opposite position to the speculator in the forward market. Hedging by the counterparty causes an inflow at the forward contract’s initial date, and an outflow at maturity. Concretely: to hedge the forward exposure (e.g., short rand/long yen forward), the counterparty borrows $x/(1 + i_t^*)$ yen at time t , converts this to $[x/(1 + i_t^*)] S_t$ rand, invests at the domestic rate i_t between t and $t + 1$, and receives $x [(1 + i_t)/(1 + i_t^*)] S_t$ rand at time $t + 1$. Covered interest parity ensures that $x [(1 + i_t)/(1 + i_t^*)] S_t = x F_t$. Hence, the amount $x [(1 + i_t)/(1 + i_t^*)] S_t$ is used to meet the forward obligation to sell $x F_t$ rand in exchange for x yen, which are used to repay the principal and interest on the loan of $x/(1 + i_t^*)$ yen, contracted at time t . The opposite set of transactions (and capital flows) would be put in place when the rand is at a forward premium (i.e., the counterparty is long rand/short yen forward).⁹*

⁹Swap transactions may also be used by the counterparty for the same hedging purposes.

However, carry trade counterparties can also use the derivatives market for their hedging requirements; and may be based offshore. Hence, portfolio debt flows to South Africa will only represent a fraction of total carry trade activity – representing rand-targeting implemented through the conventional approach, and counterparty hedging through the spot markets.

2.2.3 Carry trade with transaction costs

The second version modifies the decision rule and payoff function of the previous strategy, to reflect bid-ask spreads in the spot and forward markets. We sell x_t units of the funding currency forward according to the rule:

$$x_t = \begin{cases} +1 & \text{if } F_t^b/S_t^a > 1, \\ -1 & \text{if } F_t^a/S_t^b < 1, \\ 0 & \text{otherwise.} \end{cases} \quad (6)$$

The corresponding realised payoff at $t + 1$ is:

$$z_{t+1} = \begin{cases} x_t (F_t^b/S_{t+1}^a - 1) & \text{if } x_t > 0, \\ x_t (F_t^a/S_{t+1}^b - 1) & \text{if } x_t < 0, \\ 0 & \text{if } x_t = 0. \end{cases} \quad (7)$$

Net investment is zero, and the expected payoff is always non-negative if $E_t(1/S_{t+1}^a) = 1/S_t^a$ and $E_t(1/S_{t+1}^b) = 1/S_t^b$, which follows from $E_t(1/S_{t+1}) = 1/S_t$ if the bid-ask spread is stable.

2.2.4 BGT regression-based strategy

This strategy draws on a small variation on a regression equation used in Backus, Gregory and Telmer (BGT, henceforth) (1993)¹⁰ (who document the degree of auto-correlation in the forward premium), to directly forecast the payoff to selling yen forward from:

$$\frac{F_t - S_{t+1}}{S_{t+1}} = a + b \left(\frac{F_t - S_t}{S_t} \right) + \xi, \quad (8)$$

from which we have

$$E_t \left(\frac{F_t}{S_{t+1}} \right) = 1 + \hat{a}_t + \hat{b}_t \left(\frac{F_t - S_t}{S_t} \right). \quad (9)$$

¹⁰The equation used in BGT (1993) has S_t in the denominator of the left-hand side of equation 8. It is easy to verify that the two equations are nearly equivalent (depending on the size of a covariance term) if $1/S_t$ is a martingale.

Equation 9 uses the forward premium to project the payoff from selling yen forward, where \hat{a}_t and \hat{b}_t are recursive estimates of the coefficients, obtained using a 30-week rolling regression, where the first estimate is calculated using the first 30 data points – so the procedure avoids "look-ahead bias".

The strategy consists of selling (resp., buying) the yen forward when the payoff predicted by the regression, that is, $\hat{a}_t + \hat{b}_t ((F_t - S_t)/S_t)$, is positive (resp., negative). Specifically, for the BGT strategy without transaction costs, the speculator follows the rule:

$$x_t = \begin{array}{ll} +1 & \text{if } E_t(F_t/S_{t+1}) \geq 1, \\ -1 & \text{if } E_t(F_t/S_{t+1}) < 1. \end{array} \quad (10)$$

The associated payoff is given by equation 5. Again, the strategy involves zero net investment, and the expected payoff is always non-negative if $E_t(1/S_{t+1}) = 1/S_t$.

2.2.5 BGT regression-based strategy with transaction costs

To adjust for the bid-ask spread, the speculator implementing the BGT regression strategy computes the following:

$$E_t\left(F_t^b/S_{t+1}^a\right) = \left[1 + \hat{a}_t + \hat{b}_t \left(\frac{F_t - S_t}{S_t}\right)\right] \frac{F_t^b}{F_t} \frac{S_t}{S_t^a}, \quad (11)$$

$$E_t\left(F_t^a/S_{t+1}^b\right) = \left[1 + \hat{a}_t + \hat{b}_t \left(\frac{F_t - S_t}{S_t}\right)\right] \frac{F_t^a}{F_t} \frac{S_t}{S_t^b}. \quad (12)$$

These rules follow from 9, coupled with the assumption that the time t bid-ask spread is the best predictor of the time $t + 1$ spread, and from the implication from the BGT regression that,

$$E_t(1/S_{t+1}) = \left[1 + a + b \left(\frac{F_t - S_t}{S_t}\right)\right] \frac{1}{F_t}. \quad (13)$$

The trading rule analogous to 10 is given by

$$x_t = \begin{array}{ll} +1 & \text{if } E_t(F_t^b/S_{t+1}^a) > 1, \\ -1 & \text{if } E_t(F_t^a/S_{t+1}^b) < 1, \\ 0 & \text{otherwise,} \end{array} \quad (14)$$

and the associated payoff is given by equation 7.

3 Results

3.1 Return and volatility

Tables 1 and 2 report the average yen payoffs (reported as weekly rates of return), standard deviation and Sharpe ratio from the carry trade and regression strategies respectively. The average payoffs to the carry trade and BGT strategies "decrease" approximately by between seven to 30 per cent, depending on the target, when transaction costs are taken into account – except for the euro. (Of course, the payoffs adjusted for the bid-ask spreads are the more realistic payoffs.) Sharpe ratios decrease correspondingly.¹¹ The bid-ask spread can be large from the viewpoint of the currency trader, particularly when targeting the rand. We will henceforth focus on, and discuss only the payoffs from, the implementation of strategies that reflect bid-ask spreads.

Table 1: Returns to naïve carry trade (weekly)

<i>Target</i>	Before transaction costs			After transaction costs		
	<i>Mean %</i>	<i>SD %</i>	<i>SR</i>	<i>Mean %</i>	<i>SD %</i>	<i>SR</i>
Australia	0,43	2,45	0,177	0,40	2,44	0,164
Euro	0,24	1,85	0,129	0,26	1,68	0,155
New Zealand	0,48	2,51	0,190	0,41	2,51	0,164
South Africa	1,77	4,04	0,437	1,18	3,72	0,316

SD is standard deviation of weekly returns; SR is the Sharpe ratio

Sample period: 03/11/1997 - 21/02/2011

It is clear from Table 1 that the Australian and New Zealand dollars generate similar mean returns and volatility – and hence similar Sharpe ratios. The euro produces consistently the lower mean return, and is also the least volatile target, with the lowest Sharpe ratio – all expected. The returns from speculating on the rand are the most volatile, with an annualised standard deviation (using the square root of time) of approximately 27 percent, compared to approximately 18 per cent for the Australian and New Zealand dollars. But the average return for targeting the rand is also far larger, resulting in a Sharpe ratio, at 0,3 for weekly returns (or 2,2 annualised), approximately twice as large as those from the two more common carry targets.

¹¹Curiously, the payoff and Sharpe ratio for the Euro increase when transaction costs are included. The same finding is reported for Germany and the euro in BEKR (see Table 4 of BEKR, 2006).

The BGT regression-based strategies produce a similar general pattern. Again, targeting the South African rand generates the highest mean payoff, but with the highest standard deviation, and comfortably the largest Sharpe ratio.

Table 2: Returns to BGT-regression strategy (weekly)

<i>Target</i>	Before transaction costs			After transaction costs		
	<i>Mean %</i>	<i>SD %</i>	<i>SR</i>	<i>Mean %</i>	<i>SD %</i>	<i>SR</i>
Australia	0,28	2,48	0,114	0,28	2,44	0,114
Euro	0,21	1,84	0,116	0,23	1,79	0,129
New Zealand	0,21	2,58	0,083	0,21	2,48	0,083
South Africa	1,60	4,19	0,387	1,06	3,63	0,293

SD is standard deviation of weekly returns; SR is the Sharpe ratio

Sample period: 07/4/1997 - 21/2/2011

In brief, the volatility of the rand (measured by standard deviation), although high, is not sufficiently large to erode its attractiveness as a currency speculation target. On the contrary, by the widely used Sharpe ratio as an informal measure of "risk-adjusted" investment performance, it is a substantially more attractive target than the two other commodity currencies (over the full sample period), namely the Australian and New Zealand dollars, which are widely regarded as the two main carry trade targets (Brunnermeier, Nagel and Pedersen, 2009).

3.2 Crash risk

The previous section shows that the returns to targeting the South African currency in the yen-funded carry trade, implemented through the forward market, remain high once adjusted for the high volatility and, above all, this volatility is comparable to a passive diversified investment in the stock market, as reported in the next section. But means and standard deviations alone give an incomplete characterisation of the risk to expected reward profile if payoffs are not normally distributed. Appendix B contains histograms, cumulative mass function plots, and QQ plots, illustrating the sampling payoff distributions of the carry trade and regression strategies for each target, against the normal distribution. It is immediately apparent that these distributions are not Gaussian. We perform the Shapiro–Wilk test (Shapiro and Wilk (1965)) for each payoff series, and find (statistically highly significant) evidence to reject the null hypothesis that the distributions are Gaussian (see Table 3).

Moreover, risk factors traditionally used to price stock market returns do not price currency market returns (see Burnside, 2011). A plausible explanation for the persistence of carry trade returns is the premium required as compensation for the infrequent occurrence of very large losses.¹² The sudden unwinding of carry trades, due for example to liquidity shortfalls when speculators face funding constraints, causes the distribution of exchange rates between high and low interest rate currencies to be negatively skewed, as documented and discussed in Brunnermeier, Nagel and Pedersen (2009), Farhi and Gabaix (2009), and Burnside, Eichenbaum, Kleshchelski, and Rebelo (2011). This negative skew, an asymmetry in the distribution of exchange rates, represents crash risk in currency speculation.

Table 3: Skewness and normality

<i>Target</i>	Carry trade		BGT regression	
	<i>Skewness</i>	<i>SW</i>	<i>Skewness</i>	<i>SW</i>
Australia	-0,69	0,897(0,000)	-0,61	0,891(0,000)
Euro	-1,03	0,918(0,000)	0,14	0,948(0,001)
New Zealand	-0,48	0,931(0,000)	-1,41	0,918(0,000)
South Africa	0,85	0,915(0,000)	1,02	0,862(0,000)

Statistics reported for returns adjusted for bid-ask spreads
SW is the Shapiro-Wilk W test statistic (test significance in parentheses)

We examine higher-order statistical moments. There is clearly crash risk in the returns to the carry trade strategy we implement. The skewness statistic is negative for all country-specific targets, except one, and on average. (See Table 3.) However, the relationship between returns and crash risk is not monotonic: the targets that generate the largest Sharpe ratios are not necessarily the ones with the most negative skewness. This is consistent with the observations in Lustig and Verdelhan (2009), who find that although high interest rates mean monotonically more skewness against the dollar, the skewness of carry trade positions (long high-interest, short low-interest currencies) is not systematically related to returns – the best and worst portfolios generate roughly the same (and positive) skewness, leading them to conclude that "higher interest rates do not seem to imply more

¹²Analysts' use of the term "volatility" can be imprecise, and we realise that in some cases the "volatility" attributed to carry trade returns may (vaguely) refer to crash risk, rather than the second moment of the distribution of returns. This is of course a very loose use of the term. A tightly managed or fixed exchange rate is, by construction, not volatile; but it may still suffer sudden adjustments, or crash.

skewness against the lowest interest rate currencies" (page 9).¹³

The tentative relationship between carry trade returns and the asymmetry of the returns distribution largely disappears when we use the BGT regression strategy to identify the trading signal. There is no pattern in the skewness of the payoffs from the BGT strategy. Table 3 shows that, except for the New Zealand target, the BGT payoff distributions display skewness values that are larger (less negative) than those of the carry trade strategy, and positive in two cases. Positive skewness represents lower downside risk.¹⁴

3.3 Carry trade versus the stock market

Our findings, regarding the attractiveness of the rand as a carry trade target, are reinforced by comparing the returns from targeting the rand with the returns from a buy-and-hold investment in the South African stock market through the JSE Alsi – a market capitalisation-weighted index of the shares listed on the JSE. The skewness of stock market returns is normally used as a benchmark to determine how large the crash risk is in the carry trade. (Lustig and Verdelhan, 2009.) Table 4 collects the results for this comparison. Over the same period and at the same frequency, the Alsi rand-denominated return has a standard deviation of 3,12 per cent, which is roughly comparable to (but marginally lower than) our currency speculation strategies. However, the Alsi's average return was much lower: 0,35 per cent. As a result, the Sharpe ratio from rand-targeting speculation is approximately three to four times larger than the Sharpe ratio from investing in the stock market, of 0,11, on weekly returns, which corresponds to an annualised ratio of 0,8 before subtracting the risk-free rate, or 0,5 assuming (modestly) an annual risk-free rate of 6 per cent, compared to 2,2 for the carry trade – a result with non-trivial implications for the cost of reserve accumulation by the South African Reserve Bank and the allocation of investment funds in South Africa.¹⁵

¹³Lustig and Verdelhan's (2009) findings are more a clarification than a refutation of Brunnermeier, Nagel, and Pedersen (2009), who suggest a clear relationship between carry trades and negative skewness. The latter (i) do not implement carry trade strategies that would be pursued by speculators, and (ii) their sample only includes developed market currencies, only two of which are common carry trade targets (the Australian and New Zealand dollars).

¹⁴Downside risk is variance below the mean, and the skewness of a symmetrical (e.g., normal) distribution is zero.

¹⁵When calculating the Sharpe ratio, the risk-free rate is not subtracted from the mean return to the currency speculation strategies, because these are zero net investment posi-

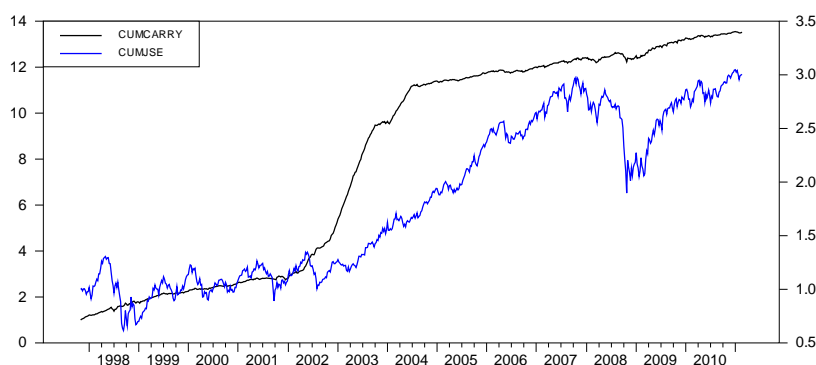
Table 4: Stock market comparison

<i>Investment</i>	<i>Mean %</i>	<i>SD %</i>	<i>SR</i>	<i>Skewness</i>	<i>Kurtosis</i>
Alsi (Rand)	0,35	3,12	0,11	-0,09	3,64
Alsi (Yen)	0,29	4,43	0,06	-0,06	4,82
Rand carry (naïve)	1,18	3,72	0,32	0,85	2,64
Rand carry (BGT)	1,06	3,63	0,29	1,02	3,43

SD is standard deviation of weekly returns; SR is the Sharpe ratio
Sample period: 07/4/1997 - 21/2/2011

The attractiveness of the carry trade is even more remarkable when the returns and risk from the investment in the stock market are expressed in yen, to be consistent with the reported yen-denominated payoffs from the carry trade. The weekly Sharpe ratio from the naïve rand-carry is five times larger than the yen-denominated ratio for the stock market. The figure below illustrates the cumulative returns from the rand-targeting strategy (left-hand scale) and the aggregate stock market (right-hand scale). The statistics in Table 4 indicate that the magnitude of weekly gains and losses (i.e., the variance of weekly returns) is similar to both investments, but the mean weekly payoff from the rand-targeting strategy is substantially higher. Hence the difference in cumulative returns: a very respectable three-fold increase through the JSE Alsi, compared to a terminal payoff 13 times the initial investment through currency speculation over the same time period.

Figure 2: Cumulative payoffs: rand target vs JSE
CUMCARRY: Rand target; CUMJSE: JSE (in yen)



tions, when implemented through the forward markets.

The larger Sharpe ratios from the rand-targeting carry trade strategies are not entirely explained by higher crash risk. The skewness from rand-targeting is (unusually) positive, while the skewness from the stock market investment is negative.¹⁶ Again, this result is consistent with Lustig and Verdelhan (2009), who report lower crash risk from a carry trade portfolio than a buy-and-hold investment in the US stock market.¹⁷ Table 4 also shows the kurtosis for the carry trade and stock market payoffs. Large positive kurtosis reflects the concentration of mass in the tails ("fat tails") and centre ("peakedness") of the distribution. It is clear that the carry trade exposes traders to more extreme payoffs, or large movements up and down, than what would be observed under a normal distribution, that is, the payoff distributions have fat tails and high peaks, with less mass in the "shoulders" of the distribution – which is not surprising, since skewed distributions are always leptokurtic ("fat in the tails") (Wuensch (2005)). But again, for the South African target, this is not more so than a passive investment in the stock market.

Therefore, although the currency speculation strategies expose the trader to crash risk, for the South African case this risk is markedly lower than the crash risk from buy-and-hold investment in the stock market – which produced a markedly lower average return. In sum, crash risk only partly explains the returns to the carry trade, and may be manageable through less naïve strategies. Targeting the rand through unhedged currency speculation produced a return profile that is as volatile, but with higher mean return, and smaller probability of rare but large losses, than investing in the stock market.

3.4 Stochastic dominance

A natural objection to the preceding arguments may be that the attractiveness of the rand only applies to investors with a relatively high level of risk tolerance, since despite the large Sharpe ratio compared to other carry targets, some investors may be unwilling to tolerate such a high level of volatility. (Put differently, the excess return may not offer sufficient compensation for the volatility.) Non-normal distributions of payoffs limit the reliability of comparing alternative investments using mean-variance analysis – and

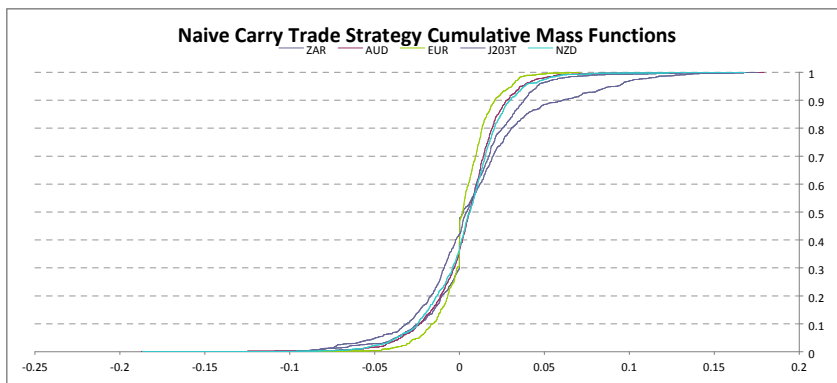
¹⁶Note that the skewness statistic is time-varying, and our results are influenced by concentrated periods of exceptionally high returns. A complete answer to this question requires a closer look at the time series behavior of the crash risk proxy.

¹⁷Note that currency portfolio diversification does not necessarily reduce skewness. See Brunnermeier, Nagel and Pedersen (2009).

hence the Sharpe ratio. Specifically, if we cannot assume that traders’ preferences for risk and return are accurately described by quadratic utility, nor that returns are normally distributed, mean-variance optimisation is difficult to justify on the grounds of rational expected utility maximisation. (See for example Ingersoll, 1987.) We use stochastic dominance to obtain a comparison of alternative payoff distributions which is valid for any risk-averse trader, irrespective of the slope of her utility of money function.

Figure 3 below contrasts the cumulative mass functions of the returns from each target, and permits a clear distribution-free comparison of the rand-target to a buy-and-hold investment in the South African stock market. It is clear that the rand-targeting strategy dominates a buy-and-hold investment in the JSE in the second-order stochastic dominance sense – that is, it is a superior investment (in the sense of maximising expected utility) for any risk-averse trader, irrespective of the trader’s preferences for risk and return, other than requiring a return premium for taking risks, and irrespective of the distribution of returns.

Figure 3: Cumulative mass functions
Carry trade targets and JSE-ALSI



The dominance of rand-targeting does not however apply to alternative currency targets – less risk-tolerant traders will not necessarily prefer targeting the rand relative to the Australian and New Zealand dollars. Variations in volatility and covariance between the returns from the different targets will determine the optimal weight of each target in a carry-trade portfolio.

4 Discussion

4.1 Rand attractiveness as a carry trade target

In South Africa, market analysts have suggested that the attractiveness and thus role of the carry trade on the rand is "a myth", because the allure of a favorable interest differential is easily eroded by the currency's high volatility.¹⁸ As a general statement, this view is false. Targeting the rand *using the derivatives market* is (on average) historically profitable, despite its high volatility, and the crash risk is lower (yet the average returns substantially higher) than that from a buy-and-hold diversified investment in the stock market, as well as more common carry targets (Australian and New Zealand dollars).

In contrast, policy analysts have simultaneously recommended "reducing the carry" and moving towards an exchange rate target band.¹⁹ Targeting an exchange rate band (in addition to other difficulties) would lead to limits on the size of exchange rate losses faced by speculators chasing the yield differential. Reducing rand volatility without reducing the interest differential will increase further the attractiveness of the rand as a carry trade target. (Speculators targeting the rand would only incur temporary losses as the rand moves down in value towards the band.)

4.2 Effect of short-term volatility on carry trade returns

Periods of high volatility, in the currency and financial markets more generally (domestic or international), are associated with capital flow reversals, away from high-interest/target currencies, and into low-interest/funding currencies. (Brunnermeier, Nagel and Pedersen, 2009). Such reversals lead to carry trade losses for speculators who maintain long positions in high-interest currencies, and short positions in low-interest currencies. Clarida, Davis and Pedersen (2009) provide compelling evidence of a strong and systematic inverse relationship between exchange rate volatility and unhedged carry trade returns.

Our discussion has focused on unhedged carry trades. Traders can buy

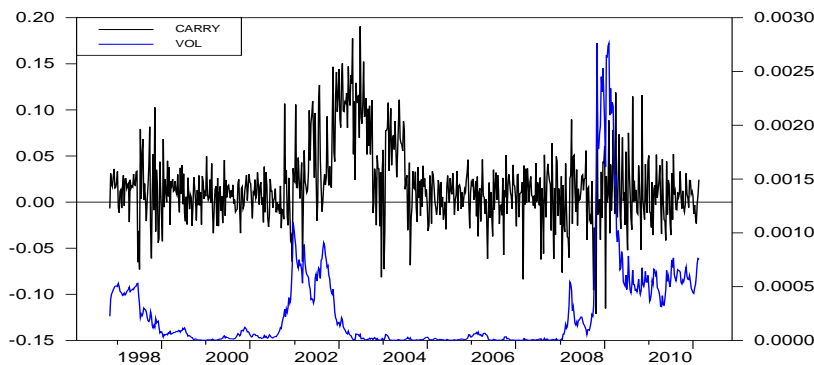
¹⁸See for one example, "Blame the carry trade alone? Urban legend with risks", Moneyweb, 20 November 2009. Regular releases from the international financial press suggest a different view – see for example "South Africa's Rand Posts Fifth Weekly Advance on Rate Premium", Bloomberg, 26 April 2008; "Rand Gains on Bets Carry-Trade Allure to Continue," Bloomberg, 9 November 2010; "Rand Weakens Versus Euro on Speculation ECB Rate Rise May Cut Carry Trade", Bloomberg, 4 April 2011.

¹⁹See for example "Manage the float", in the *Financial Mail*, 1 October 2010, p.37.

currency options to hedge the exchange rate exposure component (i.e. buy protection against unfavorable exchange rate movements). When volatility decreases, the price of these options, and hence the cost of hedging against unfavorable exchange rate movements, decreases - making the carry trade more attractive, for a given yield differential. The policy implication is that interventions to reduce *high-frequency/short-term* rand volatility (which could be desirable on other grounds), would have a perverse effect: options-hedged targeting will become cheaper; and unhedged targeting will become less risky. Both forms of the carry trade would become more attractive.

We estimate rand–yen exchange rate volatility using the GARCH(1,1) model with a t-distribution for the error term (Bollerslev (1987)), to account for the excess kurtosis in the distribution of the exchange rate. Figure 4 below shows that peaks in exchange rate volatility coincide with sharp carry trade losses, and the period producing the largest and most persistent gains to the speculator (circa 2002–2003) is accompanied by a sharp decrease in exchange rate volatility.

Figure 4: Rand carry returns and exchange rate volatility
CARRY: rand target; VOL: rand-yen rate volatility



Nevertheless, heavy rand-targeting through the currency carry trade can cause periods of gradual appreciation, possibly beyond "fundamental" value, punctuated by irregular but fast and large depreciations – leading to medium to long-term volatility. The next sections explain how.

4.3 The carry trade and currency market instability

4.3.1 Up the stairs, down the elevator

Carry trade activity driving foreign exchange turnover and capital flows means the currency under-reacts to positive shocks to the interest differential in the short-run. As articulated in Brunnermeier, Nagel and Pedersen (2009), in a world where traders face liquidity constraints, after an unanticipated increase in a currency's carry appeal (due to changes in the expected interest differential or global risk appetite), the currency will not immediately jump in response to the textbook fiction of instantaneous and unconstrained capital flows, and then depreciate to restore UIP. The reason is that keeping liquid capital in "standby" mode is costly for arbitrageurs in terms of foregone profitable opportunities. (See Mitchell, Pedersen and Pulvino (2007), and Acharya, Shin and Yorulmazer (2009)). Instead, capital moves gradually, so the currency can continue in an appreciating trend for a period, occasionally perturbed by depreciations as some participants withdraw to "cash-in". This appreciation adds to the return earned from the interest differential, attracting further targeting or inflows (by carry as well as momentum traders), appreciating the currency further, possibly leading to currency over-valuation and/or a bubble.

Smart speculators will not necessarily reverse their positions and thus push the currency towards fundamentals even if they believe the currency is mispriced (here, overvalued), as long as they believe other traders will continue buying – the synchronisation risk modelled in Abreu and Brunnermeier (2003), and the limits to arbitrage in markets for non-replicable securities (see Barberis and Thaler (2003), and Gromb and Vayanos (2010) for reviews). Hence, the appreciation and mispricing can persist for long (though unpredictable) periods.

In the absence of news on the target (or funding) currency's fundamentals, the situation is only reversed when an external shock occurs, or speculators hit funding constraints – for example during currency or/and financial crises, or other less extreme periods of market turbulence and increased risk aversion, usually reflected in the VIX index (implied volatility from US equity market options). When this occurs, however, the carry trade reversal causes an abrupt, potentially large and rapid depreciation of the target currency relative to the funding currency.²⁰ The same synchronisation risk and

²⁰The limited availability of standby capital, which delays targeting high-interest currencies and causes appreciations to be gradual, does not restrict the unwinding of the trade. On the contrary, margin calls and fire sales in extreme cases, can accelerate reversals.

limits to arbitrage may then keep the exchange rate under-valued for long periods.

The consequence is the "up the stairs, down in the elevator" pattern often observed in exchange rate dynamics, and formalised in Plantin and Shin (2011). This will be reflected by high volatility over medium to long horizons, but does not necessarily translate to more short-term volatility, as measured by the second moment of the distribution.²¹

Figure 5 shows the evolution of the value of the rand in terms of Japanese yen over our sample period. Of course factors other than currency speculation affect exchange rate dynamics, but the "up the stairs, down the elevator" pattern is periodically clear through much of the sample, particularly over the first decade of the 21st century.

Figure 5: Rand-yen exchange rate (inverted scale)

RAND: Yen-value of South African rand



Abrupt reversals of large speculative positions can be destabilising. The extent of such destabilising events, and specifically the magnitude of sudden depreciations, will depend largely on the monetary policy reaction to overheating caused by large capital inflows driven by the carry trade.

²¹Some high-frequency volatility may be tolerable, if it limits the rand's allure as a carry target, helping to keep it closer to its long-term fundamentals-driven path, and reducing the size of large depreciations when the carry trade is abruptly reversed. That is, high frequency of relatively small movements up and down in the exchange rate, may reduce the strength and frequency of more destabilizing episodes caused by rand-targeting, characterised by sustained, stable and steep appreciations, followed by rapid and aggressive depreciation.

4.3.2 Connection to monetary policy

If the inflows cause overheating, building inflationary pressure, an inflation-targeting central bank responds by increasing interest rates. This will increase the interest differential if funding currency rates remain unchanged, and attract further targeting and inflows, appreciating the currency further, creating a cycle. The depreciation, once the carry trade is reversed, will be larger, and the carry trade will be destabilising – because of the central bank’s inflation-targeting response, which would be complementary to speculators’ actions.²²

In a number of emerging market economies recently, large carry-related debt inflows have caused overheating and inflationary pressure (IMF, 2011). The monetary authorities of these countries are forced to increase interest rates to prevent inflation, but in doing so, they further increase the attractiveness of their currencies as carry targets, attracting more capital inflows²³ – a tension between inflation-targeting and the maintenance of financial stability.

South Africa experienced large capital inflows in 2010, particularly in the fixed-income market. Yet, by early 2011 there were no signs of overheating: capital inflows reduced bond yields and therefore the cost of capital, but there was no marked increase in private-sector investment; the additional liquidity was not followed by a marked increase in bank lending; the rate of change in house prices (which affect consumption through the wealth effect) started falling in mid-2010 and turned negative by February 2011; and the appreciation of the currency helps to dampen inflationary pressures. (Marcus (2011), South African Reserve Bank (2011a, 2011b).) Hence, capital inflows have not led to overheating, and the South African Reserve Bank does not need to increase interest rates in order to subdue inflationary pressures due to (carry trade driven) capital inflows. (Recent threats to the inflationary outlook stem from international commodity prices, not capital inflows.)²⁴

²²See Plantin and Shin (2011) for a formal treatment.

²³This reduces the effectiveness of measures introduced by the same countries to curb capital inflows.

²⁴Indeed, the reversal of the carry trade can be more inflationary than the rand-targeting inflows due to the pass-through from the depreciated exchange rate to domestic prices. (See Aron, Farrell, Muellbauer and Sinclair (2010).)

4.4 Remark on the cost of reserve accumulation

The stock of foreign-exchange reserves held by the South African Reserve Bank, although low compared to other emerging markets with heavily traded currencies frequently under speculative attack (e.g., major Latin American and South East Asian economies), has increased steadily over the last decade, from a precarious level of 7,5 billion US dollars in January 2000, to 47 billion by February 2011. The pace of reserve accumulation increased markedly in the more recent period, with an increase of approximately 20 per cent in the 12 months to February 2011 (see SARB, 2011b).

When accumulating reserves of safe-haven currencies, the SA Reserve Bank is buying low-yielding currencies. For sterilized interventions, this investment is financed through the issue of high-interest South African securities – exactly the opposite of targeting the rand in a carry trade funded by the reserve currency.²⁵ That is, the returns to speculators from targeting the rand through the carry trade are proportional to, and correlated with, the costs to the SA Reserve Bank from accumulating reserves of low-interest currencies. In periods of high returns to currency speculation, the costs of reserve accumulation will be correspondingly high. Financial instruments which synthesize carry trade payoffs may permit a reduction in the cost of reserve accumulation, and/or smoothing oscillations in the Bank's balance sheet.

5 Conclusion

Academic research has documented the empirical failure of UIP, which is the source of carry trade profits, since Hansen and Hodrick (1980) and Fama (1984), yet the excess returns from this simple currency speculation strategy have increased over the last three decades (Lustig and Verdelhan, 2009). Carry trade returns drive a non-trivial part of international capital flows and foreign exchange market transactions. Understanding carry trade returns is therefore important for understanding exchange rate behavior – particularly of very high and very low interest rate currencies. The South African rand is a high interest-rate currency. The returns from targeting the rand (and other indirect evidence) are consistent with a significant portion of foreign exchange turnover and fixed-income speculative flows to South Africa being driven by the carry trade, and with the weight of speculative non-resident initiated transactions in the foreign exchange market. Large speculative

²⁵See also Brink and Kock (2010).

positions affect exchange rate dynamics, and are affected by changes in the interest-rate differential. Thus, the interaction between inflation-targeting interest-rate setting, and speculators' actions, is an important determinant of exchange rate behaviour, and can influence the maintenance of macro-financial stability.

6 References

Abreu, D., and M. Brunnermeier. 2003. "Bubbles and Crashes," *Econometrica*, 71(1), 173-204.

Acharya, V., H. Shin, and T. Yorulmazer. 2009. "A Theory of Slow-Moving Capital and Contagion," *CEPR Discussion Paper* 7147.

Aron, J., G. Farrell, J. Muellbauer, and P. Sinclair. 2010. "Exchange Rate Pass-Through and Monetary Policy in South Africa." *CEPR Discussion Paper* 8153 (December).

Backus, D.K., A.W. Gregory, and C.I. Telmer. 1993. "Accounting for Forward Rates in Markets for Foreign Currency," *Journal of Finance*, 48(5), 1887-1908.

Barberis, N., and R. Thaler. 2003. "A Survey of Behavioral Finance." In, Constantinides, G., M. Harris, and R. Stulz, Eds., *Handbook of the Economics of Finance*, Vol. 1B, Ch. 18, 1053-1124. Amsterdam: Elsevier.

Bartens, R., and S. Hassan. 2010. "Value, Size and Momentum Portfolios in Real Time: The Cross-Section of South African Stocks," *Australian Journal of Management*, 35(2), 181-202.

Bansal, R., and M. Dahlquist. 2000. "The Forward Premium Puzzle: Different Tales from Developed and Emerging Economies," *Journal of International Economics*, 51(1), 115-144.

Bergman, M., and S. Hassan. 2008. "Currency Crises and Monetary Policy in an Economy with Credit Constraints: The No Interest Parity Case," *Economic Policy Research Unit*, Working Paper 2008-01, University of Copenhagen.

Bollerslev, T. 1987. "A Conditionally Heteroskedastic Time Series Model for Speculative Prices and Rates of Return." *Review of Economics and Statistics*, 69, 542-547.

Brink, N., and M. Kock. 2010. Central Bank Balance Sheet Policy in South Africa and its Implications for Money-Market Liquidity. *Working Paper WP 10-01*, South African Reserve Bank.

Brunnermeier, M., S. Nagel, and L. Pedersen. 2009. "Carry

Trades and Currency Crashes," in Acemoglu, D., Woodford, M & Rogoff, K., eds., *NBER Macroeconomics Annual 2008*, University of Chicago Press, Chicago.

Burnside, C. 2011. "Carry Trades and Risk," *NBER Working Paper 17278*, August.

Burnside, C., M. Eichenbaum, I. Kleshchelski, and S. Rebelo. 2006. "The Returns to Currency Speculation," *NBER Working paper 12489*.

Burnside, C., M. Eichenbaum, I. Kleshchelski, and S. Rebelo. 2011. "Do Peso Problems Explain the Returns to the Carry Trade?," *Review of Financial Studies*, 24(3), 853-891.

Burnside, C., M. Eichenbaum, and S. Rebelo. 2007. "The Returns to Currency Speculation in Emerging Markets," *American Economic Review*, 97(2), 333-338.

Burnside, C., M. Eichenbaum, and S. Rebelo. 2008. "Carry Trade: the Gains of Diversification," *Journal of the European Economic Association*, 6(2-3), 581-588.

Chinn, M.D. 2006. "The (Partial) Rehabilitation of Interest Rate Parity in the Floating Rate Era: Longer Horizons, Alternative Expectations, and Emerging Markets," *Journal of International Money and Finance*, 25, 7-21.

Chinn, M.D. and G. Meredith. 2004. "Monetary Policy and Long-Horizon Uncovered Interest Parity," *IMF Staff Papers*, 51(3), 409-430.

Clarida, R., J. Davis and N. Pedersen. 2009. "Currency Carry Trade Regimes: Beyond the Fama Regression," *Journal of International Money and Finance*, 28(8), 1375-1389.

Engel, C. 1996. "The Forward Discount Anomaly and the Risk Premium: A Survey of Recent Evidence," *Journal of Empirical Finance*, 3, 123-192.

Fama, E. 1984. "Forward and Spot Exchange Rates," *Journal of Monetary Economics*, 14, 319-338.

Farhi, E., and X. Gabaix. 2009. "Rare Disasters and Exchange Rates," *Working Paper, Harvard and NYU*.

Flood, R., and A. Rose. 2002. "Uncovered Interest Parity in Crisis," *IMF Staff Papers*, 49(2), 252-266.

Froot, K., and R. Thaler. 1990. "Anomalies: Foreign Exchange," *Journal of Economic Perspectives*, 4(3), 179-192.

Gagnon, J., and A. Chaboud. 2007. "What Can the Data Tell Us about Carry Trades in Japanese Yen?," *International Finance Discussion Paper 899*, Board of Governors of the Federal Reserve System.

Galati, G., A. Heath, and P. McGuire. 2007. "Evidence of Carry Trade Activity," *BIS Quarterly Review*, Part 3, September, pp. 27-41.

Gromb, D., and D. Vayanos. 2010. "Limits of Arbitrage: The State of the Theory." *NBER Working Paper* 15821 (March).

Hansen, L.P., and R. Hodrick. 1980. "Forward Exchange Rates as Optimal Predictors of Future Spot Rates: An Econometric Analysis," *Journal of Political Economy*, 88(5), 829-853.

IMF. 2011. "Recent Experiences in Managing Capital Inflows", *International Monetary Fund*, Strategy, Policy, and Review Department (February).

Ingersoll, J. 1987. *Theory of Financial Decision Making*, Rowman & Littlefield, Oxford.

Lustig, H., and A. Verdelhan, A. 2009. "Discussion of Carry Trades and Currency Crashes," in Acemoglu, D., Woodford, M and Rogoff, K., eds., *NBER Macroeconomics Annual 2008*, University of Chicago Press, Chicago.

Lyons, R. 2001. *The Microstructure Approach to Exchange Rates*, MIT Press, Cambridge and London.

Marcus, G. 2011. *Statement of the Monetary Policy Committee*, 24 March, South African Reserve Bank.

Mitchell, M., L. Pedersen, and T. Pulvino. 2007. "Slow Moving Capital," *American Economic Review*, 97(2), 215-220.

Plantin, G., and H. Shin. 2011. "Carry Trades, Monetary Policy and Speculative Dynamics," *CEPR Discussion Paper* 8224, February.

Shapiro, S., and M. Wilk. 1965. "An Analysis of Variance Test for Normality." *Biometrika*, 52 (3-4), 591-611.

South African Reserve Bank. 2011a. "Capital Market Activity," Monthly Report (various), Research Department.

South African Reserve Bank. 2011b. *Quarterly Bulletin*, No. 259, March.

Taylor, M. 1987. "Covered Interest Parity: A High-Frequency, High-Quality Data Study," *Economica*, 54(216), 429-438.

Taylor, M. 1995. "The Economics of Exchange Rates." *Journal of Economic Literature*, 33 (March), 13-74.

Wesso, G. 1999. "The Forward Rate as an Optimal Predictor of the Future Spot Rate in South Africa: an Econometric Analysis," *Occasional Paper* 13, South African Reserve Bank.

Winters, C. 2008. "The Carry Trade, Portfolio Diversification, and the Adjustment of the Japanese Yen," *Discussion Paper* 2008-2, Bank of Canada.

7 Appendix

7.1 Appendix A: Data mnemonics and bid-ask spreads

Table A1. Data mnemonics for weekly data from Datastream

<i>Currency</i>	<i>Spot</i>	<i>Forward</i>	<i>Sample period</i>
Australian dollar	BBAUDSP	BBAUD1F	07/04/1997-21/02/2011
Euro	BBEURSP	BBEUR1F	07/04/1997-21/02/2011
Japanese yen	BBJPYSP	BBJPY1F	07/04/1997-21/02/2011
New Zealand dollar	BBNZDSP	BBNZD1F	07/04/1997-21/02/2011
South African rand	BBZARSP	BBZAR1F	07/04/1997-21/02/2011

Notes. Suffixes (EB), (EO), and (ER) added to exchange rate mnemonics give bid, ask (offer), and mid (average) quotes, respectively. Dates are in the form dd/mm/yyyy. Mnemonic for the South African All Share Index (ALSI) is JSEOVER~R.

Table A2. Median bid-ask spreads

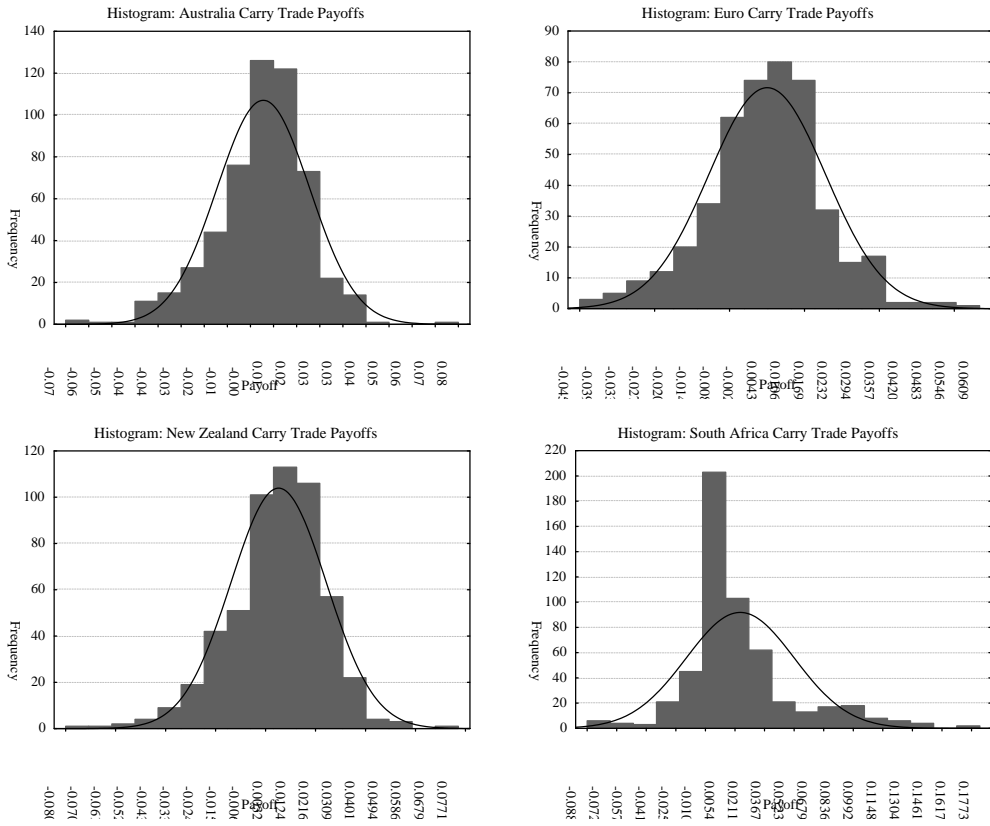
<i>Currency</i>	$100 \times \ln(Ask/Bid)$		<i>Foreign currency units</i>		<i>Units</i>
	<i>Spot</i>	<i>Forward</i>	<i>Spot</i>	<i>Forward</i>	
Australian dollar	0.0929	0.1398	0.17	0.2	Cents
Euro	0.0390	0.0554	0.03	0.05	Cents
Japanese yen	0.0554	0.0950	0.06	0.11	Yen
New Zealand dollar	0.1316	0.1743	0.24	0.31	Cents
South African rand	0.6581	0.8029	5	5.2	Cents

Forward denotes the one-month forward exchange rate

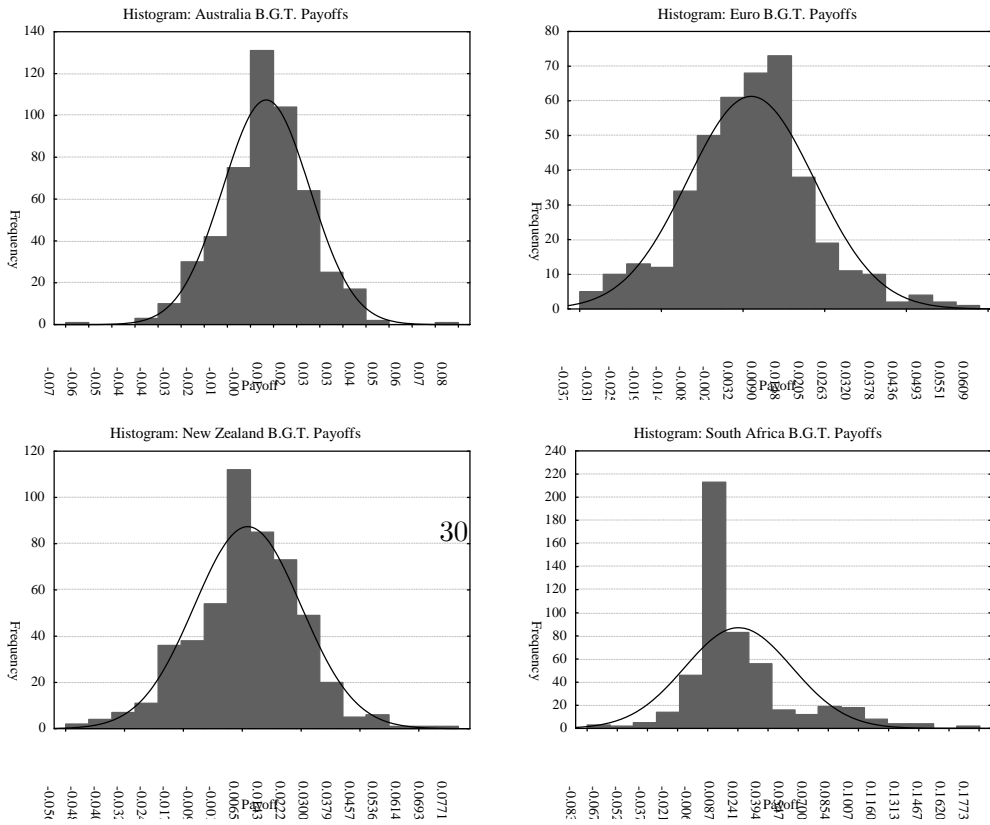
7.2 Appendix B: Histograms, cumulative mass functions, and

QQ plots

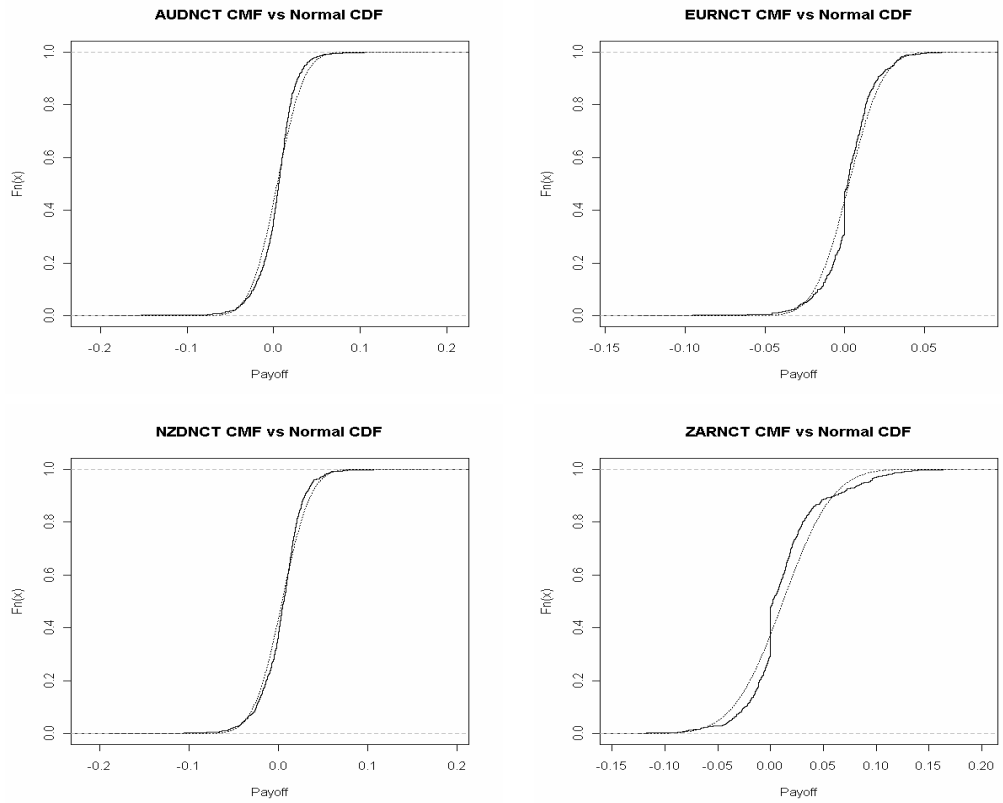
B.1. Histograms: Naïve carry trade payoffs



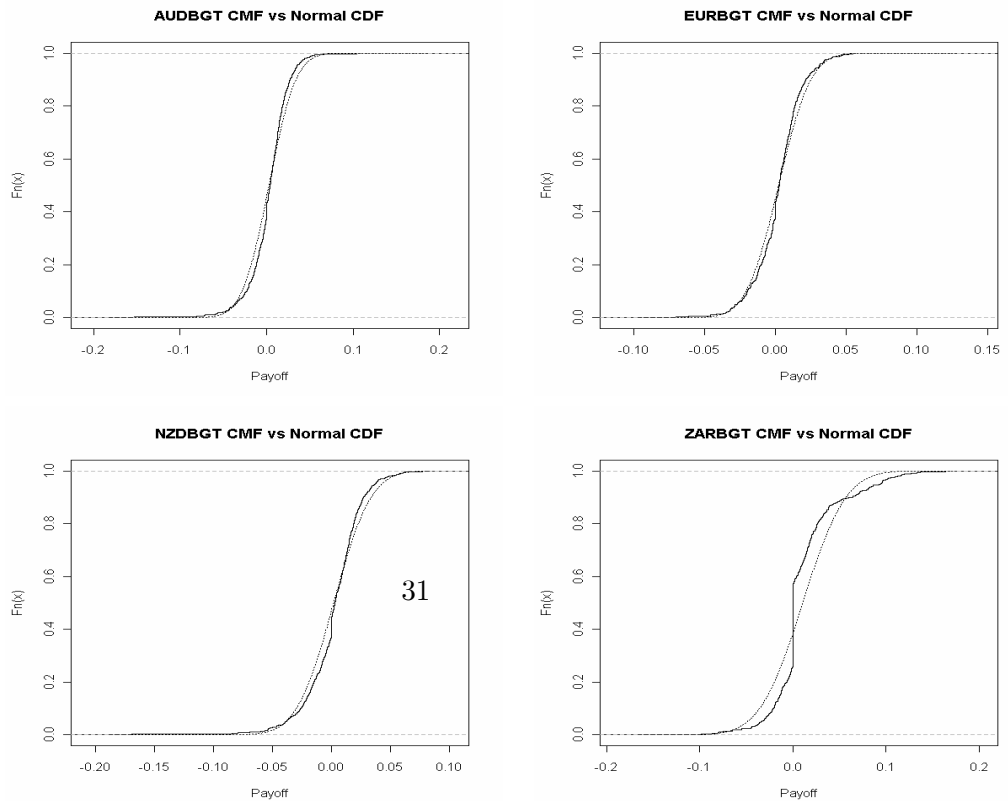
B.2. Histograms: BGT regression strategy payoffs



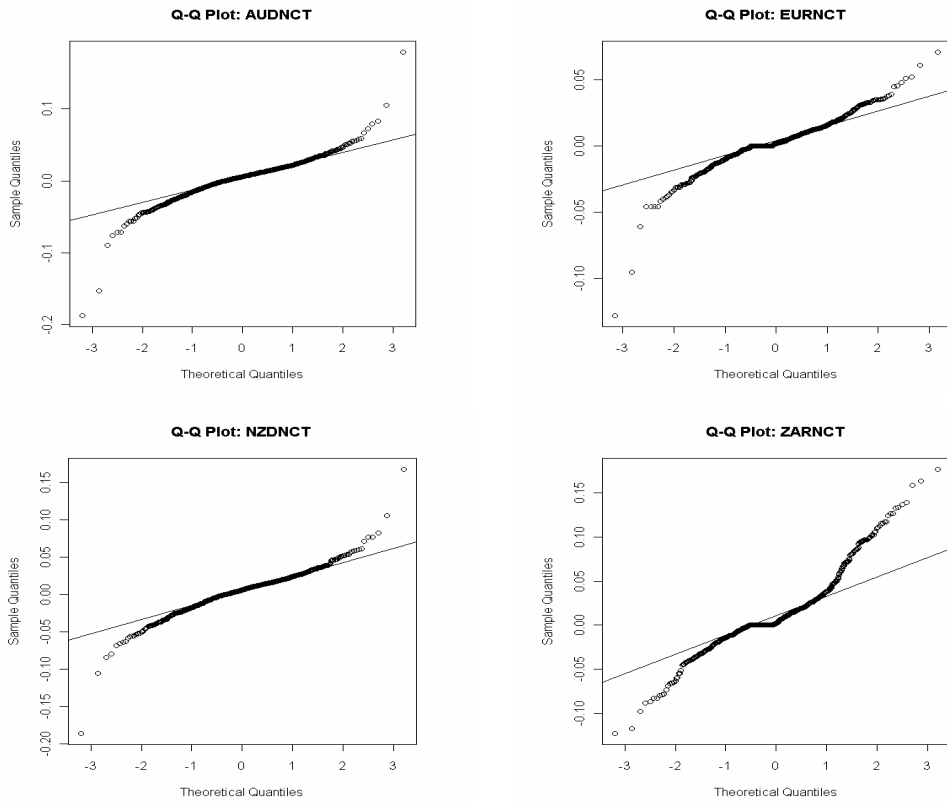
C.1. Cumulative mass functions: naïve carry trade payoffs



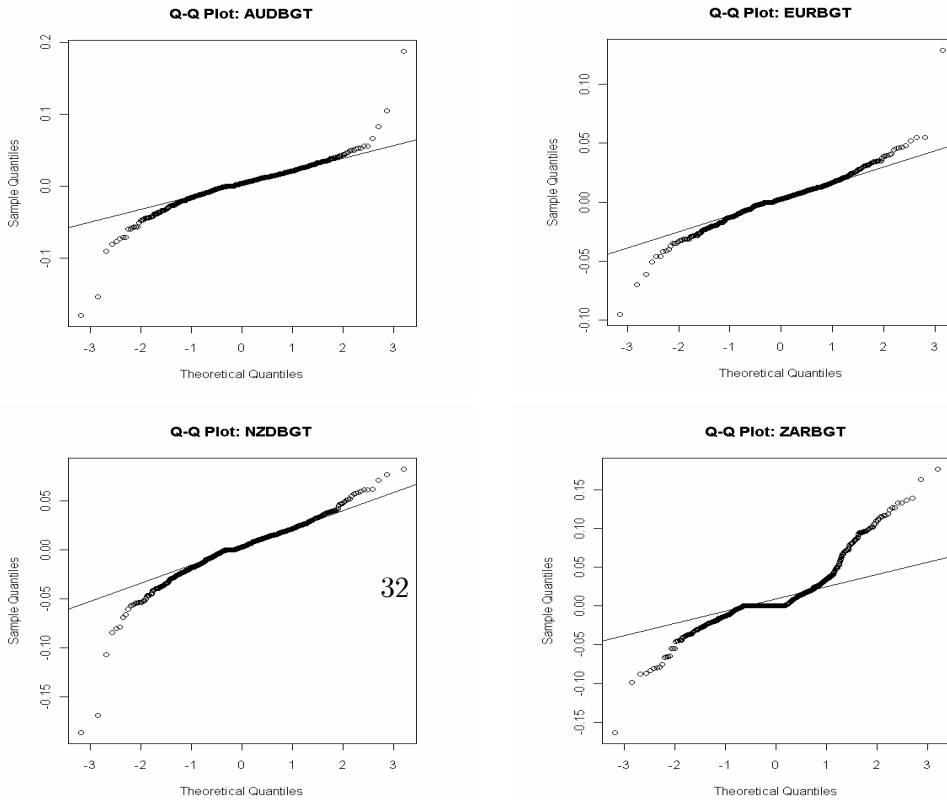
C.2. Cumulative mass functions: BGT regression strategy payoffs



D.1. Q-Q Plots: Naïve carry trade payoffs



D.2. Q-Q Plots: BGT regression strategy payoffs



Q-Q Plots not falling on the (normal) straight line indicate a non-normal distribution