



SOUTH AFRICAN RESERVE BANK

Statistical press release

Balance of payments: current account of the balance of payments¹ First quarter 2026

Release date:	11 June 2026 embargo at 11:00		
Next release:	10 September 2026		
Technical contact:	Nthabiseng Molemoeng	+27 12 313 4459	
Media contact:	media@resbank.co.za	+27 12 313 4754	

The surplus on the *current account* of the balance on payments widened markedly to R190.7 billion in the first quarter of 2026 from R50.2 billion in the fourth quarter of 2025 - the largest surplus since the third quarter of 2021. As a ratio of gross domestic product (GDP), the current account surplus widened to 2.4% in the first quarter of 2026 from 0.6% in the fourth quarter of 2025.

South Africa's *trade surplus* widened from R282.2 billion in the fourth quarter of 2025 to R437.9 billion in the first quarter of 2026 as the value of merchandise and net gold exports increased while that of merchandise imports decreased. The value of exports of goods and services in the first quarter of 2026 increased by R78.3 billion reflecting higher prices and volumes, while the value of imports of goods and services decreased by R96.8 billion as both prices and volumes decreased.

The shortfall on the *services, income and current transfer account* widened from R232.1 billion in the fourth quarter of 2025 to R247.2 billion in the first quarter of 2026. The wider deficit emanated from larger deficits on the primary income and current transfer accounts, while the shortfall on the services account narrowed. As a ratio of GDP, the deficit on the services, income and current transfer account widened from 3.0% in the fourth quarter of 2025 to 3.1% in the first quarter of 2026.

South Africa's *terms of trade* (including and excluding gold) improved further in the first quarter of 2026, as the rand price of exported goods and services increased while that of imports decreased.

¹ The current account transactions are all seasonally adjusted and annualised.

Current account of the balance of payments

R billions Seasonally adjusted and annualised	2025					2026
	Q1	Q2	Q3	Q4	Year	Q1
Current account credits (Receipts)						
Goods and services	2 387	2 370	2 396	2 447	2 400	2 526
Exports of goods	2 078	2 048	2 066	2 120	2 078	2 201
Merchandise exports (free on board)	1 910	1 870	1 917	1 927	1 906	2 045
Net gold exports	168	178	149	193	172	156
Services receipts	309	323	330	327	322	325
Primary income receipts	202	206	219	244	218	257
Secondary income (current transfers) receipts	87	86	85	79	84	81
Current account debits (Payments)						
Goods and services	2 236	2 242	2 297	2 243	2 254	2 146
Merchandise imports (free on board)	1 866	1 863	1 897	1 838	1 866	1 763
Services payments	370	379	400	405	388	383
Primary income payments	358	370	361	368	364	414
Secondary income (current transfers) payments	136	115	114	110	119	114
Balances (Net transactions: receipts less payments)						
Trade balance (goods)	212	185	169	282	212	438
Balance on trade in services	- 61	- 57	- 70	- 77	- 66	- 58
Balance on goods and services	151	128	99	205	146	380
Balance on primary income	- 155	- 165	- 142	- 124	- 147	- 156
Balance on secondary income (current transfers)	- 49	- 29	- 29	- 31	- 35	- 33
Balance on services, income and current transfers	- 266	- 250	- 241	- 232	- 247	- 247
Current account balance	- 54	- 65	- 72	50	- 35	191
Balances as a percentage of GDP						
Trade balance (goods)	2.9	2.5	2.2	3.6	2.8	5.5
Balance on trade in services	- 0.8	- 0.8	- 0.9	- 1.0	- 0.9	- 0.7
Balance on goods and services	2.0	1.7	1.3	2.6	1.9	4.7
Balance on primary income	- 2.1	- 2.2	- 1.8	- 1.6	- 1.9	- 1.9
Balance on secondary income (current transfers)	- 0.7	- 0.4	- 0.4	- 0.4	- 0.5	- 0.4
Balance on services, income and current transfers	- 3.6	- 3.3	- 3.1	- 3.0	- 3.2	- 3.1
Current account balance	- 0.7	- 0.9	- 0.9	0.6	- 0.5	2.4

Components may not add up to totals due to rounding off.

Sources: Stats SA and SARB

Indices of volumes and prices¹

2015 = 100	2025					2026
	Q1	Q2	Q3	Q4	Year	Q1
Exports, including net gold exports²						
Volume	105.8	102.3	102.6	102.0	103.2	102.5
Price	184.2	189.1	190.7	195.9	190.0	201.2
Exports, excluding net gold exports						
Volume	107.3	103.9	104.8	103.8	105.0	105.3
Price	177.4	180.9	184.0	186.3	182.1	193.1
Imports						
Volume	104.0	101.8	104.0	104.6	103.6	101.9
Price	167.7	171.8	172.1	167.1	169.7	164.2
Terms of trade³						
Including net gold exports	109.8	110.1	110.8	117.2	112.0	122.5
Excluding net gold exports	105.8	105.3	106.9	111.4	107.4	117.6

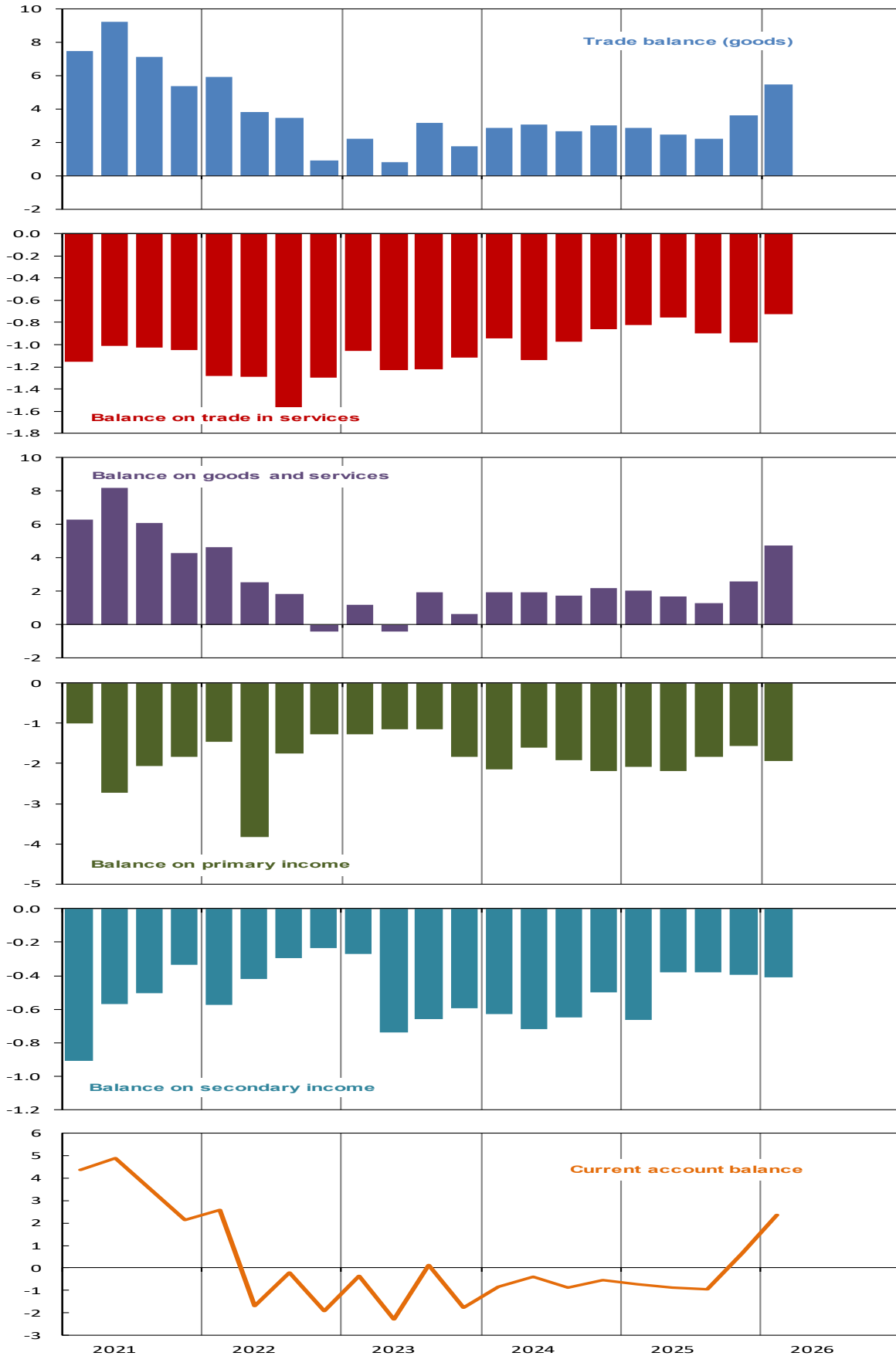
Sources: Stats SA and SARB

Notes:

1. Derived from goods and services (exports and imports of goods free on board as well as exports and imports of services); indices are based on seasonally adjusted and annualised data
2. Exports include net gold exports or net gold imports, with the latter recorded as negative exports
3. Export price index divided by import price index

Current account of the balance of payments

As a percentage of GDP



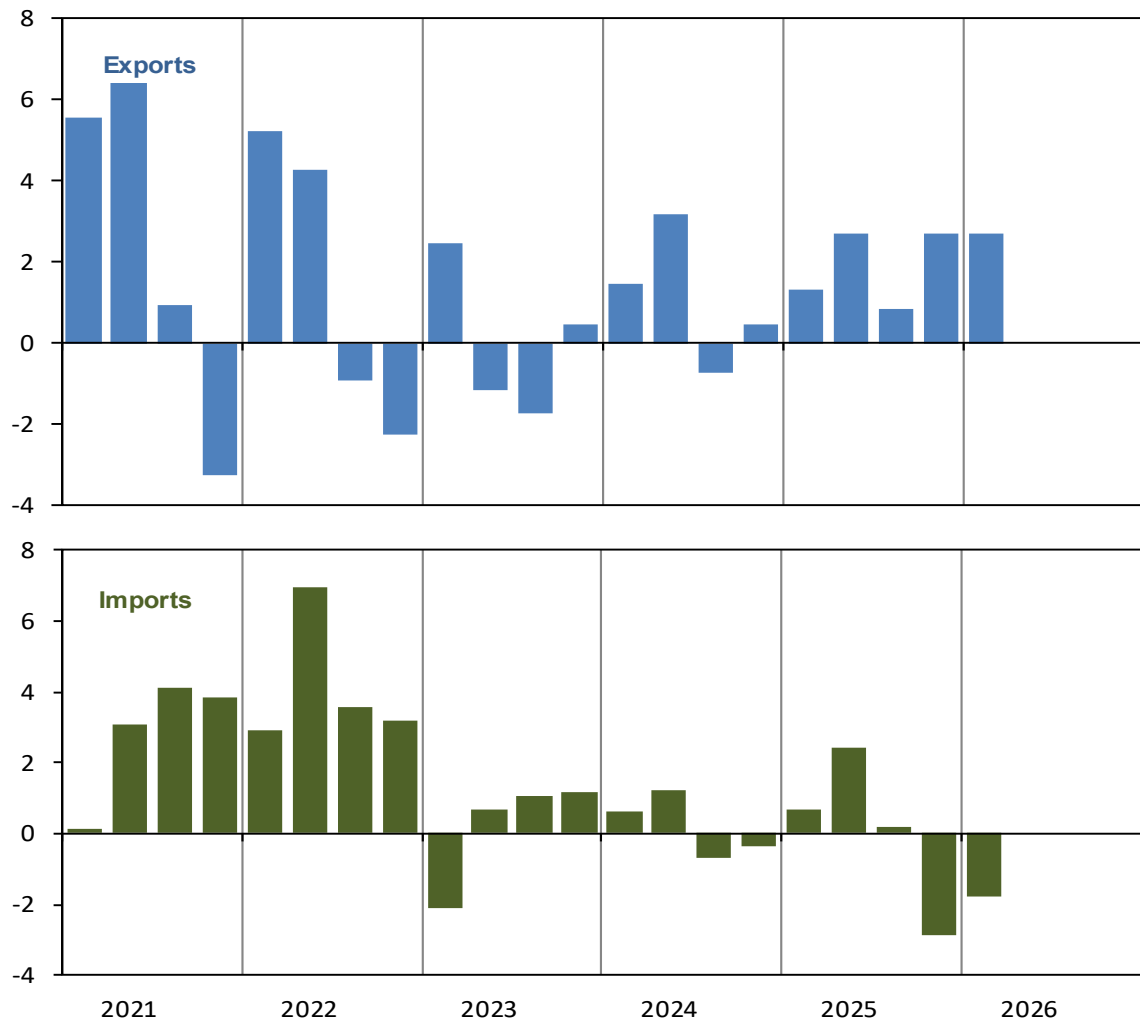
Seasonally adjusted and annualised

Data not rounded

Sources: Stats SA and SARB

Prices of exports and imports*

Percentage change from quarter to quarter

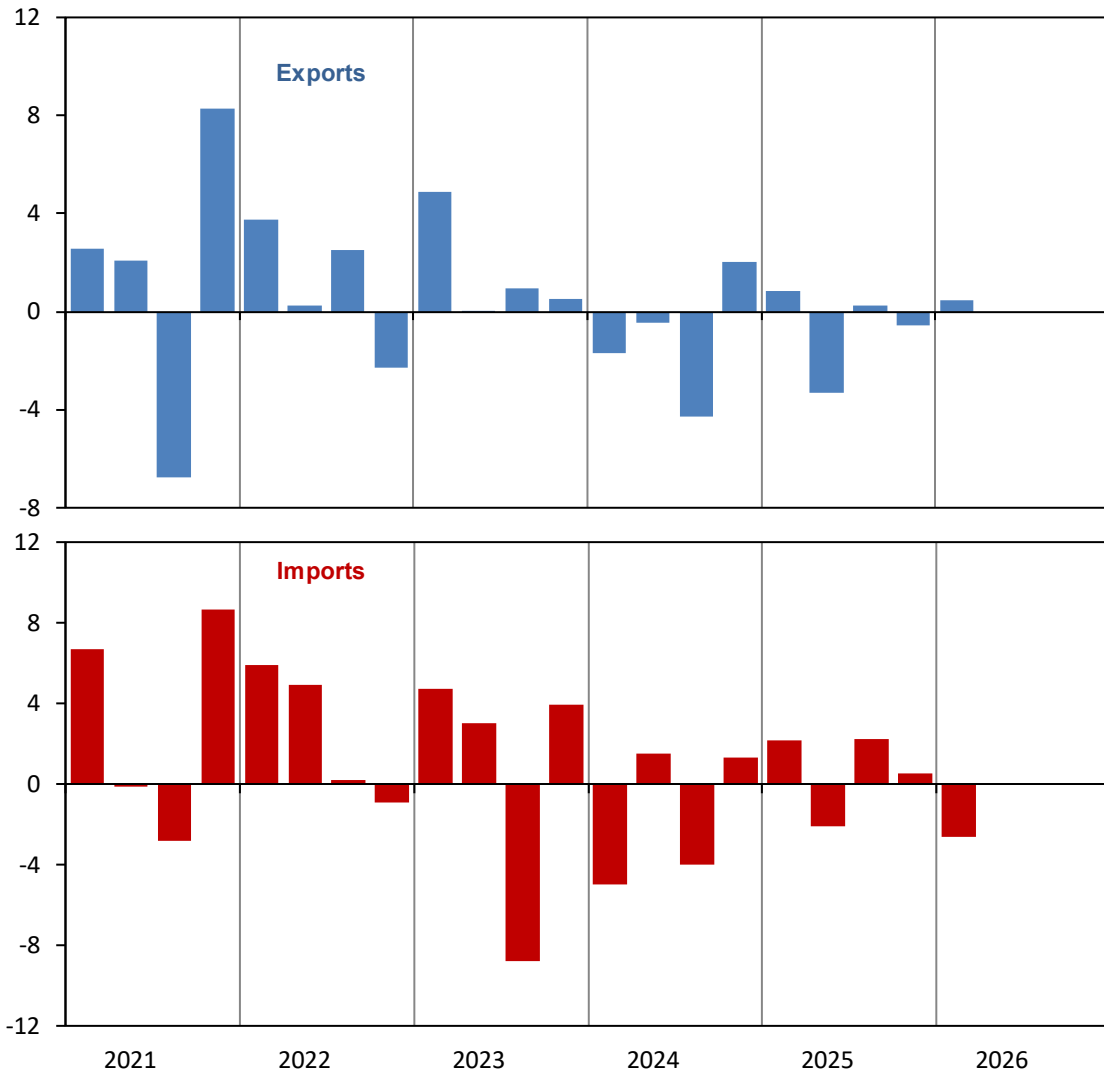


* Including services and gold

Sources: Stats SA and SARB

Volumes of exports and imports*

Percentage change from quarter to quarter



* Including services and gold
Sources: Stats SA and SARB

Additional information

Data sources:

The South African Reserve Bank (SARB) is responsible for the compilation of balance of payments statistics. The South African Revenue Service (SARS) is the primary source of South Africa's merchandise trade statistics, which include net gold exports as compiled by the SARB. The SARB makes balance of payments adjustments to merchandise trade at current prices and estimates the nominal value of services as well as primary and secondary income. The SARB seasonally adjusts primary and secondary income. Statistics South Africa (Stats SA) seasonally adjusts the nominal values of goods and services and converts them to constant values at 2015 prices.

Agencies that contribute to current account statistics

	Nominal	Seasonal adjustment	Deflators	Constant
Goods	SARB	Stats SA	Stats SA	Stats SA
Services	SARB	Stats SA	Stats SA	Stats SA
Primary income	SARB	SARB	Not applicable	Not applicable
Secondary income	SARB	SARB	Not applicable	Not applicable

SARS trade data is compiled in accordance with the *International Merchandise Trade Statistics: Concepts and Definitions Manual* and is structured according to the Harmonised System (HS) at an 8-digit level with 99 product/commodity groupings called chapters. In turn, these 99 chapters are arranged into 23 sections. The HS is developed by the World Customs Organization (WCO) and is internationally comparable up to a 6-digit level.

When SARS releases monthly merchandise trade data, the SARB and Stats SA receive the detailed data set. These releases include data of the preceding 23 months incorporating vouchers of correction and the data for the newly released month. To convert customs data to balance of payments data requires adjustments for timing, valuation, classification and coverage to correct for the main conceptual difference –

international merchandise trade statistics are based on goods entering and exiting a country whereas balance of payments transactions are based on a change in ownership between residents and non-residents. The SARB makes balance of payments adjustments to the trade data for oil, postal trade, goods procured in ports, electricity, and valuations.

The SARB's estimation of services as well as primary and secondary income is based on a variety of sources and internal calculations. These sources include, among other things, the International Transaction Reporting System (ITRS) which comprises information provided by banks to the SARB, internally driven quarterly sample surveys, credit card information, government departments, commercial banks and the JSE Limited.

Methodology:

Compilation of the balance of payments

The compilation is based on the guidelines of the sixth edition of the *Balance of Payments and International Investment Position Manual* (BPM6) of the International Monetary Fund.

Calculation as a ratio of GDP

The denominator is quarterly nominal (seasonally adjusted and annualised) GDP.

Seasonal adjustment

Seasonal adjustment identifies and removes recurring seasonal fluctuations and calendar effects to obtain the underlying movements, such as turning points, the trend cycle and the irregular component.

Stats SA seasonally adjusts goods and services. The following Stats SA document explains the methodology:

<https://www.statssa.gov.za/publications/Report%2004-04-04/Report%2004-04-042021.pdf>

The SARB seasonally adjusts primary and secondary income. The SARB follows the Eurostat guidelines on seasonal adjustment. The SARB uses the X-13-ARIMA-SEATS

procedure in Jdemetra+, a seasonal adjustment program developed and supported by the United States Census Bureau. It contains two parts: the enhanced X-11 procedure, and the ARIMA (Autoregressive Integrated Moving Average) model procedure from the SEATS (Signal Extraction in ARIMA Time Series) seasonal adjustment program. The method is divided into two main parts. The first does a pre-adjustment and the second decomposes the time series to estimate and remove the seasonal component. The M-statistics criteria are used as a benchmark for evaluating the quality of the seasonal adjustment.

Constant prices

Stats SA is responsible for the estimation of goods and services at constant prices. The following Stats SA document explains the methodology:

<https://www.statssa.gov.za/publications/Report%2004-04-04/Report%2004-04-042021.pdf>

Definitions:

The *balance of payments* is a statistical summary of transactions between residents and non-residents during a specific period. It consists of the current, capital and financial accounts.

The *current account* shows transactions of goods and services as well as primary and secondary income.

Goods are physically visible produced items over which ownership rights can be established and whose economic ownership can be passed from one institutional unit to another by engaging in transactions.

Free on board means the value of goods, excluding transportation and insurance services.

Services transactions arise from production activities and generally cannot be separated from consumption, and ownership rights cannot be separately established. The broad services categories comprise travel, transportation and other services.

Primary income transactions include investment income such as dividends and interest as the return on financial assets and compensation of employees for the contribution of labour to production activities.

Secondary income transactions consist of *current transfers* between residents and non-residents without a quid pro quo. This comprises current transfers by central government and other sectors.

The balance on *services, income and current transfers* is the net of receipts and payments of services as well as primary and secondary income transactions.

The *trade balance* is the value of merchandise and net gold exports minus merchandise imports.

The *current account balance* is the difference between credits (exports of goods and services and income receipts) and debits (imports of goods and services and income payments).

Terms of trade is the ratio of export prices to import prices.

Additional statistics are available in the accompanying Excel spreadsheet.