



SOUTH AFRICAN RESERVE BANK

## Statistical press release

### Balance of payments: current account of the balance of payments<sup>1</sup> Third quarter 2025

---

Release date:	04 December 2025 embargo at 11:00		
Next release:	12 March 2026		
Technical contact:	Nthabiseng Molemoeng	+27 12 313 4459	
Media contact:	<a href="mailto:media@resbank.co.za">media@resbank.co.za</a>	+27 12 313 4754	

---

The deficit on the *current account* of the balance of payments narrowed to R57.0 billion in the third quarter of 2025 from a revised R72.2 billion in the second quarter. The current account deficit as a ratio of gross domestic product (GDP) narrowed to 0.7% in the third quarter of 2025 from 1.0% in the second quarter.

South Africa's *trade surplus* narrowed further from R187.2 billion in the second quarter of 2025 to R178.3 billion in the third quarter as the value of merchandise imports increased more than that of goods exports. The value of exports and imports of goods and services increased by R30.8 billion and R50.7 billion respectively in the third quarter of 2025 due to both higher volumes and prices.

The deficit on the *services, income and current transfer account* decreased from R259.4 billion in the second quarter of 2025 to R235.3 billion in the third quarter. The narrower deficit was supported by a smaller shortfall on the primary income account while the deficits on the services and current transfer accounts widened. As a percentage of GDP, the deficit on the services, income and current transfer account narrowed from 3.4% in the second quarter of 2025 to 3.0% in the third quarter.

South Africa's *terms of trade* (including gold) improved slightly in the third quarter of 2025, while the terms of trade (excluding gold) improved at a faster pace as the rand price of exported goods and services increased more than that of imports.

---

<sup>1</sup> The current account transactions are all seasonally adjusted and annualised.

## Current account of the balance of payments

R billions Seasonally adjusted and annualised	2024			2025		
	Q3	Q4	Year	Q1	Q2	Q3
<b>Current account credits (Receipts)</b>						
Goods and services	2 279	2 336	2 337	2 384	2 372	2 402
Exports of goods	1 979	2 026	2 043	2 075	2 050	2 073
Merchandise exports (free on board)	1 840	1 829	1 893	1 912	1 872	1 924
Net gold exports	139	197	150	163	178	149
Services receipts	300	310	295	309	321	330
Primary income receipts	194	198	196	203	207	219
Secondary income (current transfers) receipts	84	95	85	87	86	85
<b>Current account debits (Payments)</b>						
Goods and services	2 153	2 174	2 195	2 234	2 242	2 293
Merchandise imports (free on board)	1 782	1 800	1 828	1 864	1 863	1 894
Services payments	371	374	367	370	379	399
Primary income payments	336	362	341	352	380	356
Secondary income (current transfers) payments	132	132	130	136	115	114
<b>Balances (Net transactions: receipts less payments)</b>						
<b>Trade balance (goods)</b>	<b>198</b>	<b>226</b>	<b>214</b>	<b>211</b>	<b>187</b>	<b>178</b>
Balance on trade in services	- 71	- 64	- 72	- 61	- 58	- 69
Balance on goods and services	126	162	142	150	129	109
Balance on primary income	- 142	- 164	- 145	- 149	- 173	- 137
Balance on secondary income (current transfers)	- 48	- 37	- 46	- 49	- 29	- 29
<b>Balance on services, income and current transfers</b>	<b>- 261</b>	<b>- 266</b>	<b>- 262</b>	<b>- 259</b>	<b>- 259</b>	<b>- 235</b>
<b>Current account balance</b>	<b>-63</b>	<b>-39</b>	<b>- 48</b>	<b>- 48</b>	<b>- 72</b>	<b>-57</b>
<b>Balances as a percentage of GDP</b>						
<b>Trade balance (goods)</b>	<b>2.7</b>	<b>3.0</b>	<b>2.9</b>	<b>2.8</b>	<b>2.5</b>	<b>2.3</b>
Balance on trade in services	- 1.0	- 0.9	- 1.0	- 0.8	- 0.8	- 0.9
Balance on goods and services	1.7	2.2	1.9	2.0	1.7	1.4
Balance on primary income	- 1.9	- 2.2	- 2.0	- 2.0	- 2.3	- 1.8
Balance on secondary income (current transfers)	- 0.6	- 0.5	- 0.6	- 0.7	- 0.4	- 0.4
<b>Balance on services, income and current transfers</b>	<b>- 3.5</b>	<b>- 3.6</b>	<b>- 3.6</b>	<b>- 3.5</b>	<b>- 3.4</b>	<b>- 3.0</b>
<b>Current account balance</b>	<b>- 0.9</b>	<b>- 0.5</b>	<b>- 0.7</b>	<b>- 0.6</b>	<b>- 1.0</b>	<b>- 0.7</b>

Components may not add up to totals due to rounding off.

Sources: Stats SA and SARB

## Indices of volumes and prices<sup>1</sup>

2015 = 100	2024			2025		
	Q3	Q4	Year	Q1	Q2	Q3
<b>Exports, including net gold exports<sup>2</sup></b>						
Volume	102.8	104.9	<b>105.8</b>	105.8	102.3	103.0
Price	180.9	181.7	<b>180.4</b>	183.8	189.2	190.4
<b>Exports, excluding net gold exports</b>						
Volume	104.2	105.3	<b>107.0</b>	107.5	104.0	105.3
Price	176.1	174.3	<b>175.3</b>	177.3	181.0	183.6
<b>Imports</b>						
Volume	100.4	101.8	<b>102.4</b>	103.8	101.7	103.9
Price	167.2	166.6	<b>167.1</b>	167.8	172.0	172.1
<b>Terms of trade<sup>3</sup></b>						
Including net gold exports	108.2	109.1	<b>108.0</b>	109.5	110.0	110.6
Excluding net gold exports	105.3	104.6	<b>104.9</b>	105.6	105.2	106.7

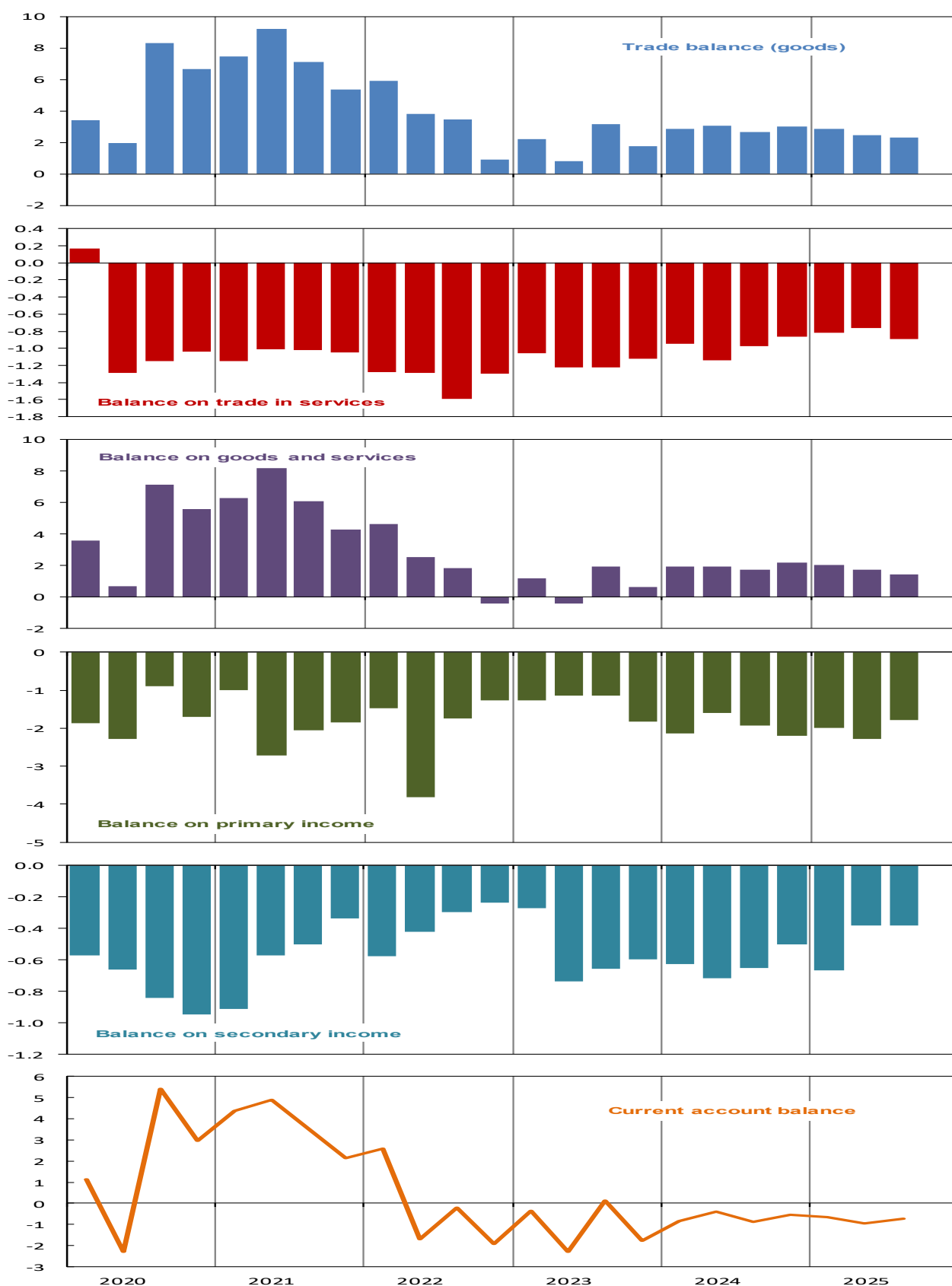
Sources: Stats SA and SARB

### Notes:

1. Derived from goods and services (exports and imports of goods free on board as well as exports and imports of services); indices are based on seasonally adjusted and annualised data
2. Exports include net gold exports or net gold imports, with the latter recorded as negative exports
3. Export price index divided by import price index

# Current account of the balance of payments

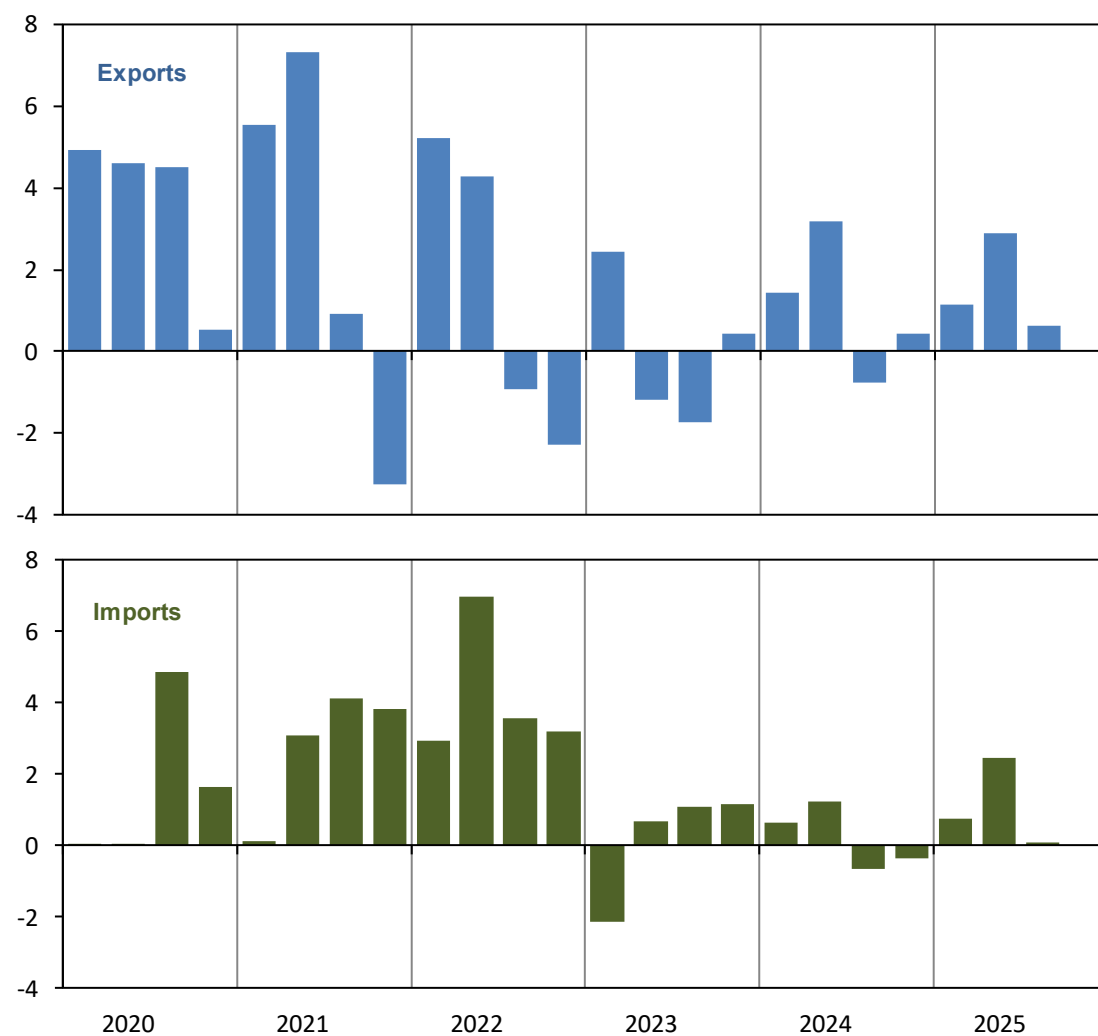
As a percentage of GDP



Seasonally adjusted and annualised  
Data not rounded  
Sources: Stats SA and SARB

## Prices of exports and imports\*

Percentage change from quarter to quarter

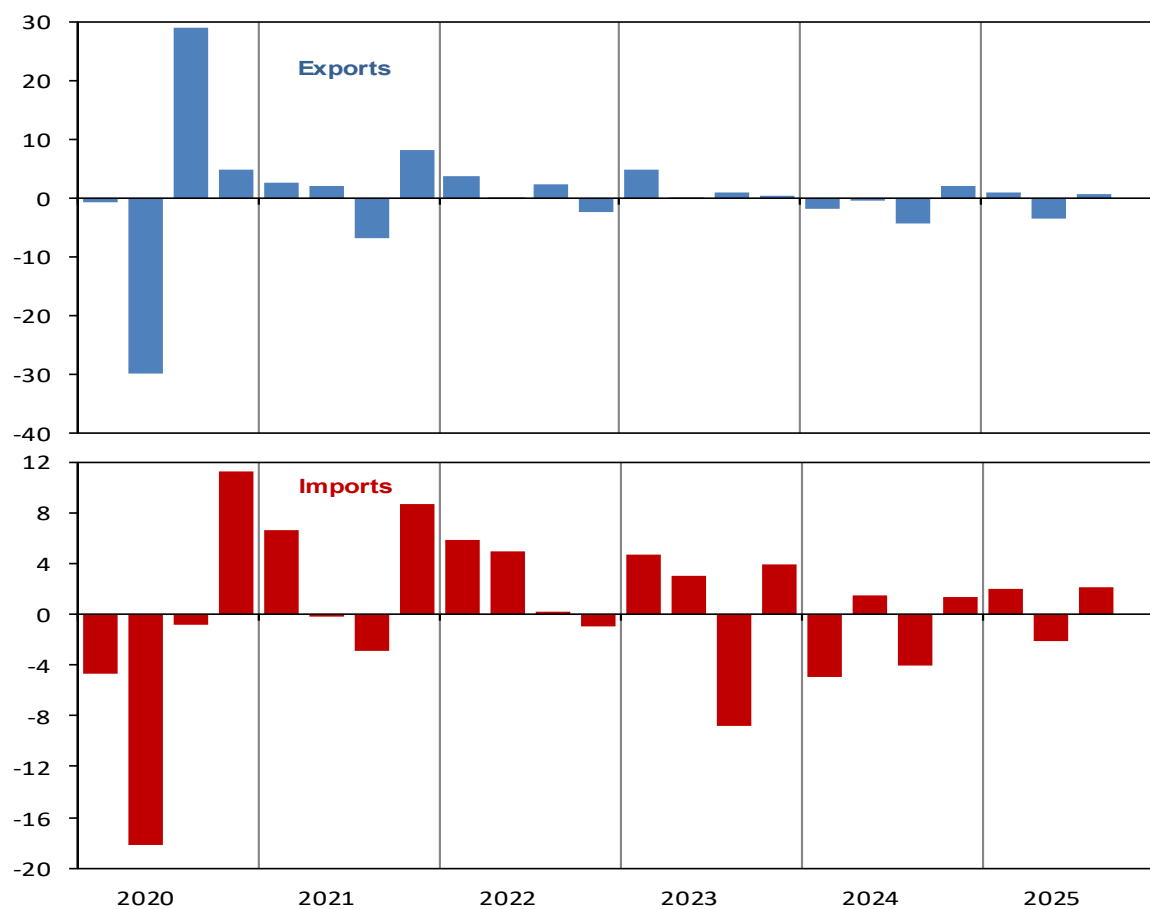


\* Including services and gold

Sources: Stats SA and SARB

## Volumes of exports and imports\*

Percentage change from quarter to quarter



\* Including services and gold

Sources: Stats SA and SARB

## Additional information

### Data sources:

The South African Reserve Bank (SARB) is responsible for the compilation of balance of payments statistics. The South African Revenue Service (SARS) is the primary source of South Africa's merchandise trade statistics, which include net gold exports as compiled by the SARB. The SARB makes balance of payments adjustments to merchandise trade at current prices and estimates the nominal value of services as well as primary and secondary income. The SARB seasonally adjusts primary and secondary income. Statistics South Africa (Stats SA) seasonally adjusts the nominal values of goods and services and converts them to constant values at 2015 prices.

### Agencies that contribute to current account statistics

	Nominal	Seasonal adjustment	Deflators	Constant
<b>Goods</b> .....	SARB	Stats SA	Stats SA	Stats SA
<b>Services</b> .....	SARB	Stats SA	Stats SA	Stats SA
<b>Primary income</b> .....	SARB	SARB	Not applicable	Not applicable
<b>Secondary income</b> ....	SARB	SARB	Not applicable	Not applicable

SARS trade data is compiled in accordance with the *International Merchandise Trade Statistics: Concepts and Definitions Manual* and is structured according to the Harmonised System (HS) at an 8-digit level with 99 product/commodity groupings called chapters. In turn, these 99 chapters are arranged into 23 sections. The HS is developed by the World Customs Organization (WCO) and is internationally comparable up to a 6-digit level.

When SARS releases monthly merchandise trade data, the SARB and Stats SA receive the detailed data set. These releases include data of the preceding 23 months incorporating vouchers of correction and the data for the newly released month. To convert customs data to balance of payments data requires adjustments for timing, valuation, classification and coverage to correct for the main conceptual difference –

international merchandise trade statistics are based on goods entering and exiting a country whereas balance of payments transactions are based on a change in ownership between residents and non-residents. The SARB makes balance of payments adjustments to the trade data for oil, postal trade, goods procured in ports, electricity, and valuations.

The SARB's estimation of services as well as primary and secondary income is based on a variety of sources and internal calculations. These sources include, among other things, the International Transaction Reporting System (ITRS) which comprises information provided by banks to the SARB, internally driven quarterly sample surveys, credit card information, government departments, commercial banks and the JSE Limited.

## **Methodology:**

### **Compilation of the balance of payments**

The compilation is based on the guidelines of the sixth edition of the *Balance of Payments and International Investment Position Manual* (BPM6) of the International Monetary Fund.

### **Calculation as a ratio of GDP**

The denominator is quarterly nominal (seasonally adjusted and annualised) GDP.

### **Seasonal adjustment**

Seasonal adjustment identifies and removes recurring seasonal fluctuations and calendar effects to obtain the underlying movements, such as turning points, the trend cycle and the irregular component.

Stats SA seasonally adjusts goods and services. The following Stats SA document explains the methodology:

<https://www.statssa.gov.za/publications/Report%2004-04-04/Report%2004-04-042021.pdf>

The SARB seasonally adjusts primary and secondary income. The SARB follows the Eurostat guidelines on seasonal adjustment. The SARB uses the X-13-ARIMA-SEATS



procedure in Jdemetra+, a seasonal adjustment program developed and supported by the United States Census Bureau. It contains two parts: the enhanced X-11 procedure, and the ARIMA (Autoregressive Integrated Moving Average) model procedure from the SEATS (Signal Extraction in ARIMA Time Series) seasonal adjustment program. The method is divided into two main parts. The first does a pre-adjustment and the second decomposes the time series to estimate and remove the seasonal component. The M-statistics criteria are used as a benchmark for evaluating the quality of the seasonal adjustment.

### **Constant prices**

Stats SA is responsible for the estimation of goods and services at constant prices. The following Stats SA document explains the methodology:

<https://www.statssa.gov.za/publications/Report%2004-04-04/Report%2004-04-042021.pdf>

### **Definitions:**

The *balance of payments* is a statistical summary of transactions between residents and non-residents during a specific period. It consists of the current, capital and financial accounts.

The *current account* shows transactions of goods and services as well as primary and secondary income.

*Goods* are physically visible produced items over which ownership rights can be established and whose economic ownership can be passed from one institutional unit to another by engaging in transactions.

*Free on board* means the value of goods, excluding transportation and insurance services.

*Services* transactions arise from production activities and generally cannot be separated from consumption, and ownership rights cannot be separately established. The broad services categories comprise travel, transportation and other services.

*Primary income* transactions include investment income such as dividends and interest as the return on financial assets and compensation of employees for the contribution of labour to production activities.

*Secondary income* transactions consist of *current transfers* between residents and non-residents without a quid pro quo. This comprises current transfers by central government and other sectors.

The balance on *services, income and current transfers* is the net of receipts and payments of services as well as primary and secondary income transactions.

The *trade balance* is the value of merchandise and net gold exports minus merchandise imports.

The *current account balance* is the difference between credits (exports of goods and services and income receipts) and debits (imports of goods and services and income payments).

*Terms of trade* is the ratio of export prices to import prices.

**Additional statistics are available in the accompanying Excel spreadsheet.**